

# SLC7A9 Rabbit pAb

货号: **AYP19572**

## 产品信息

反应	Human,Mouse,Rat
宿主	Rabbit
克隆性	Polyclonal
预测反应	
应用	WB IF/ICC
推荐浓度	<b>WB:</b> 1:500 - 1:1000 <b>IF/ICC:</b> 1:50 - 1:200
理论分子量	53kDa
实测分子量	53kDa
形式	Liquid
保存条件	Store at -20°C. Avoid freeze / thaw cycles. Buffer: PBS with 0.01% thiomersal,50% glycerol,pH7.3.
偶联物	Unconjugated
阳性对照	LO2,Mouse kidney
细胞定位	Apical cell membrane,Multi-pass membrane protein
纯化	Affinity purification

## 抗原信息

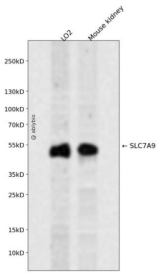
抗原信息	Recombinant fusion protein containing a sequence corresponding to amino acids 1-100 of human SLC7A9 (NP_055085.1).
序列	MGDTGLRKRREDEKSIQSQEPKTTSLQKELGLISGISIIVGTIIGSGIFVSPKSVLSNTEAVGPCLIIWAACGVLATLGALCFAE LGTMITKSGGEYPYL

## 靶点信息

研究背景	This gene encodes a protein that belongs to a family of light subunits of amino acid transporters. This protein plays a role in the high-affinity and sodium-independent transport of cystine and neutral and dibasic amino acids, and appears to function in the reabsorption of cystine in the kidney tubule. Mutations in this gene cause non-type I cystinuria, a disease that leads to cystine stones in the urinary system due to impaired transport of cystine and dibasic amino acids. Alternate transcript variants, which encode the same protein, have been found for this gene.
------	---

基因ID	11136
基因名	SLC7A9
Swiss	P82251
别名	SLC7A9;BAT1;CSNU3

## 产品验证



Western blot analysis of SLC7A9 expressed in LO2, Mouse kidney using SLC7A9 Rabbit pAb at 1:1000. Secondary antibody: HRP Goat Anti-Rabbit IgG (H+L) at 1:5000. Lysates/proteins: 30ug per lane. Blocking buffer: 5% non-fat dry milk in TBST. Detection: ECL Enhanced Kit. Exposure time: 120s.

## 实验步骤

访问官网浏览详情: [www.ablybio.cn](http://www.ablybio.cn)