

# SYNPO2 Rabbit pAb

货号: **AYP19561**

## 产品信息

反应	Mouse
宿主	Rabbit
克隆性	Polyclonal
预测反应	
应用	WB
推荐浓度	<b>WB:</b> 1:500 - 1:1000
理论分子量	74kDa/117kDa/119kDa/133kDa/136kDa
实测分子量	117kDa
形式	Liquid
保存条件	Store at -20°C. Avoid freeze / thaw cycles. Buffer: PBS with 0.01% thiomersal, 50% glycerol, pH7.3.
偶联物	Unconjugated
阳性对照	Mouse skeletal muscle
细胞定位	Cytoplasm, Nucleus
纯化	Affinity purification

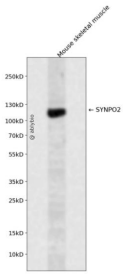
## 抗原信息

抗原信息	Recombinant fusion protein containing a sequence corresponding to amino acids 1-300 of human SYNPO 2 (NP_597734.2).
序列	MGTGDFICISMTGGAPWGFRLQGGKEQKQPLQVAKIRNQSASGSGLCGDEVVSINGNPCADLTYPEVIKLMESITDSL QMLIKRPSSGISEALISENENKNLEHLTHGGYVESTTLQIRPATKTQCTEFFLAPVKTEVPLAENQRS GPDCAGSLKEETGPS YQRAPQMPDSQRGRVAEELILREKVEAVQPGPVVELQLSLSQERHKGASGPLVALPGA EKSKSPDPDPNLSHDRVHINSI PTNEKADPFLRSSKIIQISSGREL RVIQESEAGDAGLPRVEVILDCSDRQKTEGCR

## 靶点信息

研究背景	Has an actin-binding and actin-bundling activity. Can induce the formation of F-actin networks in an isoform-specific manner. At the sarcomeric Z lines is proposed to act as adapter protein that links nascent myofibers to the sarcolemma via ZYX and may play a role in early assembly and stabilization of the Z lines. Involved in autophagosome formation. May play a role in chaperone-assisted selective autophagy (CASA) involved in Z lines maintenance in striated muscle under mechanical tension; may link the client-processing CASA chaperone machinery to a membrane-tethering and fusion complex providing autophagosome membranes (By similarity). Involved in regulation of cell migration. May be a tumor suppressor.
基因ID	171024
基因名	SYNPO2
Swiss	Q9UMS6
别名	SYNPO2

## 产品验证



Western blot analysis of SYNPO2 expressed in Mouse skeletal muscle using SYNPO2 Rabbit pAb at 1:1000. Secondary antibody: HRP Goat Anti-Rabbit IgG (H+L) at 1:5000. Lysates/proteins: 30ug per lane. Blocking buffer: 5% non-fat dry milk in TBST. Detection: ECL Enhanced Kit. Exposure time: 120s.

## 实验步骤

访问官网浏览详情: [www.ablybio.cn](http://www.ablybio.cn)