

PALD1 Rabbit pAb

货号: **AYP19551**

产品信息

| | |
|-------|--|
| 反应 | Human,Mouse,Rat |
| 宿主 | Rabbit |
| 克隆性 | Polyclonal |
| 预测反应 | |
| 应用 | WB IF/ICC |
| 推荐浓度 | WB: 1:500 - 1:2000 IF/ICC: 1:50 - 1:100 |
| 理论分子量 | 96kDa |
| 实测分子量 | 97kDa |
| 形式 | Liquid |
| 保存条件 | Store at -20°C. Avoid freeze / thaw cycles. Buffer: PBS with 0.01% thiomersal,50% glycerol,pH7.3. |
| 偶联物 | Unconjugated |
| 阳性对照 | Mouse kidney,Mouse lung,Mouse heart,Mouse liver,Rat kidney |
| 细胞定位 | Cytoplasm,cytosol |
| 纯化 | Affinity purification |

抗原信息

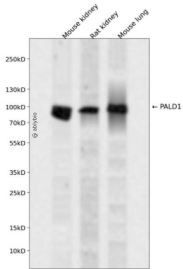
| | |
|------|---|
| 抗原信息 | Recombinant fusion protein containing a sequence corresponding to amino acids 1-300 of human PALD1 (NP_055246.2). |
| 序列 | MGTTASTAQQTVSAGTPFEGQLQSGTMDSRHSVSIHSFQSTSLHNSKAKSIIPNKVAPVVITYNCKEEFQIHDELLKAHYTL GRLSDNTPEHYLVQGRYFLVRDVTEKMDVLGTVGSCGAPNFRQVQGGLTVFGMGQPSSLGFRRLVQLKQKDGHRECVI FCVREEPVFLRADEDFVSYTPRDKQNLHENLQGLGPGVRVESLELAIRKEIHDFQAQLSENTYHVVHNTEDLWGEPHAVA HGEDDLHVTEEVYKRPLFLQPTYRYHRLPLPEQGSPLEAQLDAFVSVLRETPSLLQLRD |

靶点信息

| | |
|------|--|
| 研究背景 | Predicted to enable protein tyrosine phosphatase activity. Predicted to be involved in peptidyl-tyrosine d ephosphorylation. Located in cytosol. |
| 基因ID | 27143 |

| | |
|-------|-----------------------------|
| 基因名 | PALD1 |
| Swiss | Q9ULE6 |
| 别名 | PALD1;KIAA1274;PALD;paladin |

产品验证



Western blot analysis of PALD1 expressed in Mouse kidney,Rat kidney,Mouse lung using PALD1 Rabbit p Ab at 1:1000. Secondary antibody: HRP Goat Anti-Rabbit IgG (H+L) at 1:5000. Lysates/proteins: 30ug per lane. Blocking buffer: 5% non-fat dry milk in TBST. Detection: ECL Enhanced Kit. Exposure time: 120s

实验步骤

访问官网浏览详情: www.ablybio.cn