

PLCH1 Rabbit pAb

货号: **AYP19545**

产品信息

反应	Rat
宿主	Rabbit
克隆性	Polyclonal
预测反应	
应用	WB
推荐浓度	WB: 1:1000 - 1:3000
理论分子量	114kDa/115kDa/184kDa/189kDa
实测分子量	175kDa
形式	Liquid
保存条件	Store at -20°C. Avoid freeze / thaw cycles. Buffer: PBS with 0.01% thiomersal,50% glycerol,pH7.3.
偶联物	Unconjugated
阳性对照	Rat brain
细胞定位	Cytoplasm,Membrane
纯化	Affinity purification

抗原信息

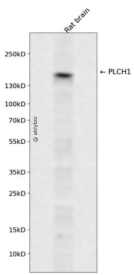
抗原信息	Recombinant fusion protein containing a sequence corresponding to amino acids 1100-1400 of human PLCH1 (NP_055811.1).
序列	LEGNRGKGRAATSFSLSDVSMCLSDIPDLHSTAILQESVISHLIDNVTLTNEPEGSSISALIGQFDETNQALTVVSHLHNT SVMGHCPLPSLGLKMPIKHGFCCKGSKSSFLCSPPELIALSSSETTKHATNTVYETTCTPISKTKPDDDLSSKAKTAALES NLPGPSNTRGWLPKSPKGEDWETLKCSPASSPDLTLEDVIADPTLCFNSGESSLVEIDGESENLSLTTCEYRREGTSQ LASPLKLYNQGVVEHFQRGLRNGYCKETLRPSVPEIFNNIQDVKTQSSISYLAYQ

靶点信息

研究背景	PLCH1 is a member of the PLC-eta family of the phosphoinositide-specific phospholipase C (PLC) superfamily of enzymes that cleave phosphatidylinositol 4,5-bisphosphate (PtdIns(4,5)P2) to generate second messengers inositol 1,4,5-trisphosphate (IP3) and diacylglycerol (DAG) (Hwang et al., 2005 [PubMed 15702972]).[supplied by OMIM, Jun 2009]
------	---

基因ID	23007
基因名	PLCH1
Swiss	Q4KWH8
别名	PLCH1;PLCL3

产品验证



Western blot analysis of PLCH1 expressed in Rat brain using PLCH1 Rabbit pAb at 1:1000. Secondary antibody: HRP Goat Anti-Rabbit IgG (H+L) at 1:5000. Lysates/proteins: 30ug per lane. Blocking buffer: 5% non-fat dry milk in TBST. Detection: ECL Enhanced Kit. Exposure time: 120s.

实验步骤

访问官网浏览详情: www.ablybio.cn