

CHCHD6 Rabbit pAb

货号: **AYP19543**

产品信息

反应	Human
宿主	Rabbit
克隆性	Polyclonal
预测反应	
应用	WB
推荐浓度	WB: 1:500 - 1:2000
理论分子量	26kDa
实测分子量	26kDa
形式	Liquid
保存条件	Store at -20°C. Avoid freeze / thaw cycles. Buffer: PBS with 0.01% thiomersal, 50% glycerol, pH7.3.
偶联物	Unconjugated
阳性对照	A-549, HeLa
细胞定位	Lipid-anchor, Mitochondrion, Mitochondrion inner membrane
纯化	Affinity purification

抗原信息

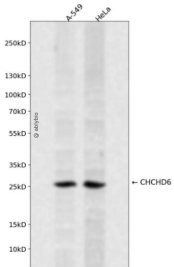
抗原信息	Recombinant fusion protein containing a sequence corresponding to amino acids 1-235 of human CHCHD6 (NP_115719.1).
序列	MGSTESSEGRVRSFGVDEEERVRVLQGVRLSENVVNRMKEPSPPAPTSSSTFGLQDGNLRAPHKESTLPRSGSSGGQ QPSGMKEGVKRYEQEHAAIQDKLFQVAKREREAATKHSKASLPTGEGSISHEEQSVRLARELESREAELRRRDTFYKEQL ERIERKNAEMYKLSSEQFHEAASKMESTIKPRRVEPVCSGLQAQILHCYRDRPHEVLLCSDLVKAYQRCVSAAHKG

靶点信息

研究背景	Component of the MICOS complex, a large protein complex of the mitochondrial inner membrane that plays crucial roles in the maintenance of crista junctions, inner membrane architecture, and formation of contact sites to the outer membrane.
基因ID	84303

基因名	CHCHD6
Swiss	Q9BRQ6
别名	CHCHD6;CHCM1;Mic25;PPP1R23

产品验证



Western blot analysis of CHCHD6 expressed in A-549, HeLa using CHCHD6 Rabbit pAb at 1:1000. Secondary antibody: HRP Goat Anti-Rabbit IgG (H+L) at 1:5000. Lysates/proteins: 30ug per lane. Blocking buffer: 5% non-fat dry milk in TBST. Detection: ECL Enhanced Kit. Exposure time: 120s.

实验步骤

访问官网浏览详情: www.ablybio.cn