

GMFG Rabbit pAb

货号: **AYP19525**

产品信息

反应	Mouse
宿主	Rabbit
克隆性	Polyclonal
预测反应	
应用	WB
推荐浓度	WB: 1:500 - 1:1000
理论分子量	16kDa
实测分子量	17kDa
形式	Liquid
保存条件	Store at -20°C. Avoid freeze / thaw cycles. Buffer: PBS with 0.01% thiomersal, 50% glycerol, pH7.3.
偶联物	Unconjugated
阳性对照	Mouse kidney
细胞定位	extracellular region
纯化	Affinity purification

抗原信息

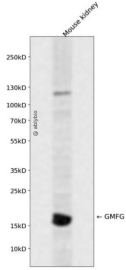
抗原信息	Recombinant fusion protein containing a sequence corresponding to amino acids 1-70 of human GMFG (NP_004868.1).
序列	MSDSLWVCEVDPELTKLRKFRFRKETDAAIIMKVDKDRQMVVLEEEFQNISPEELKMELPERQPRFVV

靶点信息

研究背景	Predicted to enable Arp2/3 complex binding activity. Predicted to be involved in actin filament debranching and negative regulation of Arp2/3 complex-mediated actin nucleation. Predicted to be located in extracellular region; ficolin-1-rich granule lumen; and secretory granule lumen.
基因ID	9535
基因名	GMFG

Swiss	O60234
别名	GMFG;GMF-GAMMA

产品验证



Western blot analysis of GMFG expressed in Mouse kidney using GMFG Rabbit pAb at 1:1000. Secondary antibody: HRP Goat Anti-Rabbit IgG (H+L) at 1:5000. Lysates/proteins: 30ug per lane. Blocking buffer: 5% non-fat dry milk in TBST. Detection: ECL Enhanced Kit. Exposure time: 120s.

实验步骤

访问官网浏览详情: www.ablybio.cn