

SFXN1 Rabbit pAb

货号: **AYP19524**

产品信息

反应	Human,Mouse,Rat
宿主	Rabbit
克隆性	Polyclonal
预测反应	
应用	WB
推荐浓度	WB: 1:500 - 1:2000
理论分子量	35kDa
实测分子量	30kDa
形式	Liquid
保存条件	Store at -20°C. Avoid freeze / thaw cycles. Buffer: PBS with 0.01% thiomersal,50% glycerol,pH7.3.
偶联物	Unconjugated
阳性对照	MCF7,22Rv1,LO2,HeLa,Mouse liver,Mouse brain,Rat liver
细胞定位	Mitochondrion membrane,Multi-pass membrane protein
纯化	Affinity purification

抗原信息

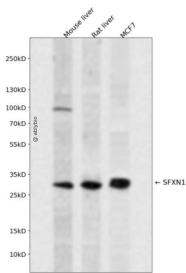
抗原信息	Recombinant fusion protein containing a sequence corresponding to amino acids 87-322 of human SFXN1 (NP_073591.2).
序列	MILIGRMSAQVPMNMTITGCMMTFYRTPAVLFWQWQINQSFNAVVNNTNRSGDAPLTVNELGTAYVSATTGAVATALGLN ALTKHVSPILIGRFVPPFAAVAAANCINILMRQRELKVGIPVTDENGNRLGESANAQAITQVVVSRILMAAPGMAIPPFIMN TLEKKAFLKRFPWMSAPIQVGLVGFCLVFATPLCCALFPQKSSMSVTSLEAELQAKIQESHPELRRVYFNKGL

靶点信息

研究背景	Mitochondrial serine transporter that mediates transport of serine into mitochondria, an important step of the one-carbon metabolism pathway. Mitochondrial serine is converted to glycine and formate, which then exits to the cytosol where it is used to generate the charged folates that serve as one-carbon donors. Transports both D-serine and L-serine. Also able to transport other amino-acids, such as alanine. May be directly involved in the transport of a component required for iron utilization into or out of the mitochondria (By similarity).
------	---

基因ID	94081
基因名	SFXN1
Swiss	Q9H9B4
别名	SFXN1;TCC

产品验证



Western blot analysis of SFXN1 expressed in Mouse liver,Rat liver,MCF7 using SFXN1 Rabbit pAb at 1:1 000. Secondary antibody: HRP Goat Anti-Rabbit IgG (H+L) at 1:5000. Lysates/proteins: 30ug per lane. Blocking buffer: 5% non-fat dry milk in TBST. Detection: ECL Enhanced Kit. Exposure time: 120s.

实验步骤

访问官网浏览详情: www.ablybio.cn