

# WSB2 Rabbit pAb

货号: **AYP19520**

## 产品信息

|       |  |
|-------|--|
| 反应    | Mouse,Rat  |
| 宿主    | Rabbit   |
| 克隆性   | Polyclonal   |
| 预测反应  |  |
| 应用    | WB IHC   |
| 推荐浓度  | <b>WB:</b> 1:500 - 1:2000<br><b>IHC:</b> 1:50 - 1:200  |
| 理论分子量 | 21kDa/45kDa/47kDa  |
| 实测分子量 | 40-43kDa   |
| 形式    | Liquid   |
| 保存条件  | Store at -20°C. Avoid freeze / thaw cycles.<br>Buffer: PBS with 0.01% thiomersal,50% glycerol,pH7.3. |
| 偶联物   | Unconjugated   |
| 阳性对照  | Mouse kidney,Rat kidney,Rat spleen   |
| 细胞定位  | cytosol  |
| 纯化    | Affinity purification  |

## 抗原信息

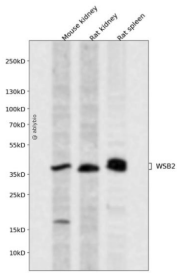
|      |  |
|------|--|
| 抗原信息 | Recombinant fusion protein containing a sequence corresponding to amino acids 1-200 of human WSB2 (NP_061109.1).   |
| 序列   | MEAGEEPLLLAELKPGRPHQFDWKSSCETWSVAFSPDGSWFAWSQGHCVKIPWPLEEQFIPKGF EAKSRSSKNETKG<br>RGSPKEKTLDCGQIVWGLAFSPWSPPSRKLWARHHPQVPDVSLVLTATGLNDGQIKIWEVQTGLLLLNLSGHQDVVRD<br>LSFTPSGSLILVSASRDKTLRIWDLNKHGKQIQVLSGHLQWV |

## 靶点信息

|      |   |
|------|---|
| 研究背景 | This gene encodes a member of the WD-protein subfamily. The encoded protein contains five WD-repeats spanning most of the protein and an SOCS box in the C-terminus. The SOCS box may act as a bridge between specific substrate-binding domains and E3 ubiquitin protein ligases. Three transcript variants encoding different isoforms have been found for this gene. |
|------|---|

|       |           |
|-------|-----------|
| 基因ID  | 55884     |
| 基因名   | WSB2      |
| Swiss | Q9NYS7    |
| 别名    | WSB2;SBA2 |

## 产品验证



Western blot analysis of WSB2 expressed in Mouse kidney,Rat kidney,Rat spleen using WSB2 Rabbit pAb at 1:1000. Secondary antibody: HRP Goat Anti-Rabbit IgG (H+L) at 1:5000. Lysates/proteins: 30ug per lane. Blocking buffer: 5% non-fat dry milk in TBST. Detection: ECL Enhanced Kit. Exposure time: 120s.

## 实验步骤

访问官网浏览详情: [www.ablybio.cn](http://www.ablybio.cn)