

CYP2D6 Rabbit pAb

货号: AYP19515

产品信息

反应	Human,Mouse,Rat
宿主	Rabbit
克隆性	Polyclonal
预测反应	
应用	WB IHC
推荐浓度	WB: 1:100 - 1:500 IHC: 1:20 - 1:100
理论分子量	50kDa/55kDa
实测分子量	60kDa
形式	Liquid
保存条件	Store at -20°C. Avoid freeze / thaw cycles. Buffer: PBS with 0.02% sodium azide,50% glycerol,pH7.3.
偶联物	Unconjugated
阳性对照	Mouse liver,Rat liver
细胞定位	Endoplasmic reticulum membrane,Microsome membrane,Peripheral membrane protein
纯化	Affinity purification

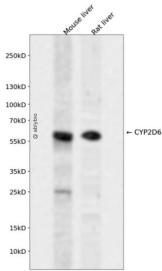
抗原信息

抗原信息	Recombinant fusion protein containing a sequence corresponding to amino acids 20-230 of human CYP2D6 (NP_000097.3).
序列	VDLMHRRQRWAARYPPGPLPLPGLGNLLHVDVFQNTPYCFDQLRRRFGDVFSLQLAWTPVVVLNGLAAVREALVTHGEDT ADRPVPITQILGFGPRSQGVFLARYGPAWREQRRFSVSTLRNLGLGKKSLEQWVTEEAACLCAAFANHSGRPFPPNGLL DKAVSNVIASLTCGRRFEYDDPRFLRLLLDLAQEGLKEESGFLREVLNAVPL

靶点信息

研究背景	This gene encodes a member of the cytochrome P450 superfamily of enzymes. The cytochrome P450 proteins are monooxygenases which catalyze many reactions involved in drug metabolism and synthesis of cholesterol, steroids and other lipids. This protein localizes to the endoplasmic reticulum and is known to metabolize as many as 25% of commonly prescribed drugs. Its substrates include antidepressants, antipsychotics, analgesics and antitussives, beta adrenergic blocking agents, antiarrhythmics and antiemetics. The gene is highly polymorphic in the human population; certain alleles result in the poor metabolizer phenotype, characterized by a decreased ability to metabolize the enzyme's substrates. Some individuals with the poor metabolizer phenotype have no functional protein since they carry 2 null alleles whereas in other individuals the gene is absent. This gene can vary in copy number and individuals with the ultrarapid metabolizer phenotype can have 3 or more active copies of the gene. Alternatively spliced transcript variants encoding different isoforms have been found for this gene.
基因ID	1565
基因名	CYP2D6
Swiss	P10635
别名	CYP2D6;CPD6;CYP2D;CYP2D7AP;CYP2D7BP;CYP2D7P2;CYP2D8P2;CYP2DL1;CYPIID6;P450-DB1;P450C2D;P450DB1

产品验证



Western blot analysis of CYP2D6 expressed in Mouse liver, Rat liver using CYP2D6 Rabbit pAb at 1:1000. Secondary antibody: HRP Goat Anti-Rabbit IgG (H+L) at 1:5000. Lysates/proteins: 30ug per lane. Blocking buffer: 5% non-fat dry milk in TBST. Detection: ECL Enhanced Kit. Exposure time: 120s.

实验步骤

访问官网浏览详情: www.ablybio.cn