

IFI30 Rabbit pAb

货号: **AYP19513**

产品信息

反应	Human
宿主	Rabbit
克隆性	Polyclonal
预测反应	
应用	WB
推荐浓度	WB: 1:500 - 1:2000
理论分子量	27kDa
实测分子量	28kDa
形式	Liquid
保存条件	Store at -20°C. Avoid freeze / thaw cycles. Buffer: PBS with 0.01% thiomersal,50% glycerol,pH7.3.
偶联物	Unconjugated
阳性对照	A-431,Raji
细胞定位	Lysosome,Secreted
纯化	Affinity purification

抗原信息

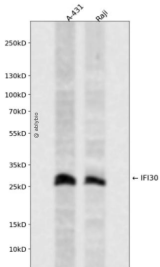
抗原信息	Recombinant fusion protein containing a sequence corresponding to amino acids 1-250 of human IFI30 (N P_006323.2).
序列	MTLSPLLLFLPPLLLLLDVPTAAVQASPLQALDFFGNGPPVNYKTGNLYLRGPKKSNAPLVNVTLYEALCGGCRAFLIRELFPTWLLVMEILNVTLPYGNAEQNVSGRWEFKCQHGEEECKFNKVEACVLDLDMELAFITVCMEEFEDMERSLPLCLQLYAPGLSPDTIMECAMGDRGMQLMHANAQRDALQPPHEYVPWVTVNGKPLEDQTQLLTLCVQLYQGKPDVCPSTSSLRVCFK

靶点信息

研究背景	The protein encoded by this gene is a lysosomal thiol reductase that at low pH can reduce protein disulfide bonds. The enzyme is expressed constitutively in antigen-presenting cells and induced by gamma-interferon in other cell types. This enzyme has an important role in MHC class II-restricted antigen processing.
基因ID	10437

基因名	IFI30
Swiss	P13284
别名	IFI30;GILT;IFI-30;IP-30;IP30

产品验证



Western blot analysis of IFI30 expressed in A-431,Raji using IFI30 Rabbit pAb at 1:1000. Secondary antibody: HRP Goat Anti-Rabbit IgG (H+L) at 1:5000. Lysates/proteins: 30ug per lane. Blocking buffer: 5% non-fat dry milk in TBST. Detection: ECL Enhanced Kit. Exposure time: 120s.

实验步骤

访问官网浏览详情: www.ablybio.cn