

RPL32 Rabbit pAb

货号: **AYP19511**

产品信息

反应	Human,Mouse,Rat
宿主	Rabbit
克隆性	Polyclonal
预测反应	
应用	WB IHC IF/ICC
推荐浓度	WB: 1:500 - 1:2000 IHC: 1:50 - 1:100 IF/ICC: 1:50 - 1:100
理论分子量	15kDa
实测分子量	16kDa
形式	Liquid
保存条件	Store at -20°C. Avoid freeze / thaw cycles. Buffer: PBS with 0.01% thiomersal,50% glycerol,pH7.3.
偶联物	Unconjugated
阳性对照	A-549,HepG2,NIH/3T3,Mouse liver,Mouse stomach,Mouse spleen,Rat ovary
细胞定位	cytoplasm,cytosol,cytosolic ribosome
纯化	Affinity purification

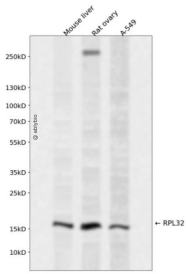
抗原信息

抗原信息	Recombinant fusion protein containing a sequence corresponding to amino acids 1-135 of human RPL32 (NP_000985.1).
序列	MAALRPLVKPKIVKKRTKKFIRHQSDRYVKIKRNWRKPRGIDNRVRRRFKQGILMPNIGYGSNKKTKHMLPSGFRKFLVHN VKELEVLLMCNKSYCAEIAHNVSSKNRKAIVERAAQLAIRVTNPANRLRSEENE

靶点信息

研究背景	Ribosomes, the organelles that catalyze protein synthesis, consist of a small 40S subunit and a large 60S subunit. Together these subunits are composed of 4 RNA species and approximately 80 structurally distinct proteins. This gene encodes a ribosomal protein that is a component of the 60S subunit. The protein belongs to the L32E family of ribosomal proteins. It is located in the cytoplasm. Although some studies have mapped this gene to 3q13.3-q21, it is believed to map to 3p25-p24. As is typical for genes encoding ribosomal proteins, there are multiple processed pseudogenes of this gene dispersed through the genome. Alternatively spliced transcript variants encoding the same protein have been observed for this gene.
基因ID	6161
基因名	RPL32
Swiss	P62910
别名	RPL32;L32;PP9932

产品验证



Western blot analysis of RPL32 expressed in Mouse liver,Rat ovary,A-549 using RPL32 Rabbit pAb at 1:1000. Secondary antibody: HRP Goat Anti-Rabbit IgG (H+L) at 1:5000. Lysates/proteins: 30ug per lane. Blocking buffer: 5% non-fat dry milk in TBST. Detection: ECL Enhanced Kit. Exposure time: 120s.

实验步骤

访问官网浏览详情: www.ablybio.cn