

IL12B Rabbit pAb

货号: **AYP19504**

产品信息

反应	Human,Mouse
宿主	Rabbit
克隆性	Polyclonal
预测反应	
应用	WB IF/ICC
推荐浓度	WB: 1:1000 - 1:2000 IF/ICC: 1:100 - 1:200
理论分子量	37kDa
实测分子量	37kDa
形式	Liquid
保存条件	Store at -20°C. Avoid freeze / thaw cycles. Buffer: PBS with 0.01% thiomersal,50% glycerol,pH7.3.
偶联物	Unconjugated
阳性对照	A-549,HeLa
细胞定位	Secreted
纯化	Affinity purification

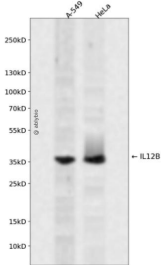
抗原信息

抗原信息	Recombinant fusion protein containing a sequence corresponding to amino acids 23-328 of human IL12B (NP_002178.2).
序列	IWELKKDVYVVELDWYPDAPGEMVVLTCDTPEEDGITWTLDSSEVLGSGKTLTIQVKEFGDAGQYTCHKGGEVLSHLL LLHKKEDGIWSTDILKDQKEPKNKTLRCEAKNYSGRFTCWWLTISTDLTFSVKSSRGSSDPQGVTCGAATLSAERVRG DNKEYEYSEVCQEDSACPAAEESLPIEVMVDAVHKLKYENYTSFFIRDIKPDPPKNLQLKPLKNSRQVEVSWEYPDTWST PHSYFSLTFCVQVQGKSKREKKDRVFTDKTSATVICRKNASISVRAQDRYSSSWSEWASVPCS

靶点信息

研究背景	This gene encodes a subunit of interleukin 12, a cytokine that acts on T and natural killer cells, and has a broad array of biological activities. Interleukin 12 is a disulfide-linked heterodimer composed of the 40 kD cytokine receptor like subunit encoded by this gene, and a 35 kD subunit encoded by IL12A. This cytokine is expressed by activated macrophages that serve as an essential inducer of Th1 cells development. This cytokine has been found to be important for sustaining a sufficient number of memory/effector Th1 cells to mediate long-term protection to an intracellular pathogen. Overexpression of this gene was observed in the central nervous system of patients with multiple sclerosis (MS), suggesting a role of this cytokine in the pathogenesis of the disease. The promoter polymorphism of this gene has been reported to be associated with the severity of atopic and non-atopic asthma in children.
基因ID	3593
基因名	IL12B
Swiss	P29460
别名	IL12B;CLMF;CLMF2;IL-12B;IMD28;IMD29;NKSF;NKSF2

产品验证



Western blot analysis of IL12B expressed in A-549, HeLa using IL12B Rabbit pAb at 1:1000. Secondary antibody: HRP Goat Anti-Rabbit IgG (H+L) at 1:5000. Lysates/proteins: 30ug per lane. Blocking buffer: 5% non-fat dry milk in TBST. Detection: ECL Enhanced Kit. Exposure time: 120s.

实验步骤

访问官网浏览详情: www.ablybio.cn