

BET1 Rabbit pAb

货号: **AYP19488**

产品信息

反应	Human
宿主	Rabbit
克隆性	Polyclonal
预测反应	
应用	WB IHC
推荐浓度	WB: 1:500 - 1:2000 IHC: 1:50 - 1:100
理论分子量	9kDa/13kDa
实测分子量	13kDa
形式	Liquid
保存条件	Store at -20°C. Avoid freeze / thaw cycles. Buffer: PBS with 0.01% thiomersal, 50% glycerol, pH7.3.
偶联物	Unconjugated
阳性对照	U-87MG, HeLa
细胞定位	Endoplasmic reticulum membrane, Golgi apparatus, Golgi apparatus membrane, Single-pass type IV membrane protein, cis-Golgi network membrane
纯化	Affinity purification

抗原信息

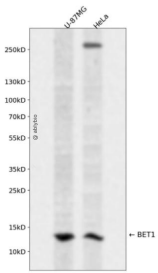
抗原信息	Recombinant fusion protein containing a sequence corresponding to amino acids 1-94 of human BET1 (NP_005859.1).
序列	MRRAGLGEGVPPGNYGNYGYANSYGYSACEEENERLTESLRSKVTAIKSLSIEIGHEVKTQNKLLAEMDSQFDSTTGFLGKT MGKLIKLSRGSQT

靶点信息

研究背景	This gene encodes a golgi-associated membrane protein that participates in vesicular transport from the endoplasmic reticulum (ER) to the Golgi complex. The encoded protein functions as a soluble N-ethylmaleimide-sensitive factor attachment protein receptor and may be involved in the docking of ER-derived vesicles with the cis-Golgi membrane. Alternative splicing results in multiple transcript variants.
------	--

基因ID	10282
基因名	BET1
Swiss	O15155
别名	BET1;HBET1

产品验证



Western blot analysis of BET1 expressed in U-87MG, HeLa using BET1 Rabbit pAb at 1:1000. Secondary antibody: HRP Goat Anti-Rabbit IgG (H+L) at 1:5000. Lysates/proteins: 30ug per lane. Blocking buffer: 5% non-fat dry milk in TBST. Detection: ECL Enhanced Kit. Exposure time: 120s.

实验步骤

访问官网浏览详情: www.ablybio.cn