

RPRD2 Rabbit pAb

货号: **AYP19485**

产品信息

反应	Mouse
宿主	Rabbit
克隆性	Polyclonal
预测反应	
应用	WB
推荐浓度	WB: 1:500 - 1:2000
理论分子量	17kDa/100kDa/152kDa/156kDa
实测分子量	156kDa
形式	Liquid
保存条件	Store at -20°C. Avoid freeze / thaw cycles. Buffer: PBS with 0.01% thiomersal, 50% glycerol, pH7.3.
偶联物	Unconjugated
阳性对照	Mouse liver
细胞定位	nucleoplasm, RNA polymerase II, holoenzyme
纯化	Affinity purification

抗原信息

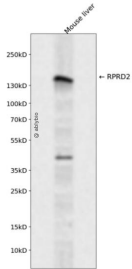
抗原信息	Recombinant fusion protein containing a sequence corresponding to amino acids 1-350 of human RPRD2 (NP_001284603.1).
序列	MAAGGGGGSSKASSSSASSAGALESSLDRKFQSVTNTMESIQGLSSWCIENTKHHSTIVYHWMKWLRRSAYPHRLNLFY LANDVIQNCKRKNAIIFRESFADVLPEAAALVKDPSVSKSVERIFKIWEDRNVYPEEMIVALREALTSTNPKAALKSKIVAEFR SQALIEELLLYKRSEDQIELKEKQLSTMRVDVCSTETLCKDKTGGKKFSKEFEEASSKLEEFVNGLDKQVKNGPSLTEAL ENAGIFYEAQYKEVKVAVANAYKTFANRVNLLKKKLDQLKSTLPDPEESPVPSPSMDAPSPTGSESPFQGMGGEESQSPTM ESEKSATPEPVTNDRDVEDMELSDV

靶点信息

研究背景	Predicted to enable RNA polymerase II complex binding activity. Predicted to be involved in mRNA 3'-end processing. Part of RNA polymerase II, holoenzyme.
基因ID	23248

基因名	RPRD2
Swiss	Q5VT52
别名	RPRD2;HSPC099;KIAA0460

产品验证



Western blot analysis of RPRD2 expressed in Mouse liver using RPRD2 Rabbit pAb at 1:1000. Secondary antibody: HRP Goat Anti-Rabbit IgG (H+L) at 1:5000. Lysates/proteins: 30ug per lane. Blocking buffer: 5% non-fat dry milk in TBST. Detection: ECL Enhanced Kit. Exposure time: 120s.

实验步骤

访问官网浏览详情: www.ablybio.cn