

# SENP1 Rabbit pAb

货号: **AYP19482**

## 产品信息

|       |  |
|-------|--|
| 反应    | Human,Mouse,Rat  |
| 宿主    | Rabbit   |
| 克隆性   | Polyclonal   |
| 预测反应  |  |
| 应用    | WB IHC   |
| 推荐浓度  | <b>WB:</b> 1:500 - 1:2000<br><b>IHC:</b> 1:50 - 1:200  |
| 理论分子量 | 73kDa  |
| 实测分子量 | 73kDa  |
| 形式    | Liquid   |
| 保存条件  | Store at -20°C. Avoid freeze / thaw cycles.<br>Buffer: PBS with 0.01% thiomersal,50% glycerol,pH7.3. |
| 偶联物   | Unconjugated   |
| 阳性对照  | BxPC-3,HT-29,HepG2,HeLa,Mouse testis,Mouse thymus,Rat testis   |
| 细胞定位  | Cytoplasm,Nucleus  |
| 纯化    | Affinity purification  |

## 抗原信息

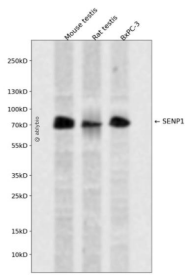
|      |  |
|------|--|
| 抗原信息 | Recombinant fusion protein containing a sequence corresponding to amino acids 220-420 of human SENP 1 (NP_001254523.1).  |
| 序列   | SRCLSSSKNTLKDSLFLKNGNSCASQIIGSDTSSSGSASILTNQEQLSHSVYLSSTYTPDVAFGSKDSGTLHHPHHHSVPH QPDNLAASNTQSEGSDSVILLKVKDSQTPTPSSTFFQAEWLWIKELTSVYDSRERLRQIEEQKALALQLQNQLQEREHS VHDSVELHLRVPLEKEIPVTVVQETQKKGHKLTDESEF |

## 靶点信息

|      |   |
|------|---|
| 研究背景 | This gene encodes a cysteine protease that specifically targets members of the small ubiquitin-like modifier (SUMO) protein family. This protease regulates SUMO pathways by deconjugating sumoylated proteins. This protease also functions to process the precursor SUMO proteins into their mature form. Alternate splicing results in multiple transcript variants. |
|------|---|

|       |              |
|-------|--------------|
| 基因ID  | 29843        |
| 基因名   | SENP1        |
| Swiss | Q9P0U3       |
| 别名    | SENP1;SuPr-2 |

## 产品验证



Western blot analysis of SENP1 expressed in Mouse testis,Rat testis,BxPC-3 using SENP1 Rabbit pAb at 1:1000. Secondary antibody: HRP Goat Anti-Rabbit IgG (H+L) at 1:5000. Lysates/proteins: 30ug per lane. Blocking buffer: 5% non-fat dry milk in TBST. Detection: ECL Enhanced Kit. Exposure time: 120s.

## 实验步骤

访问官网浏览详情: [www.ablybio.cn](http://www.ablybio.cn)