

LUC7L2 Rabbit pAb

货号: **AYP19479**

产品信息

反应	Human,Mouse
宿主	Rabbit
克隆性	Polyclonal
预测反应	
应用	WB
推荐浓度	WB: 1:500 - 1:2000
理论分子量	46kDa
实测分子量	46kDa
形式	Liquid
保存条件	Store at -20°C. Avoid freeze / thaw cycles. Buffer: PBS with 0.01% thiomersal,50% glycerol,pH7.3.
偶联物	Unconjugated
阳性对照	K-562,293T,HeLa,Mouse kidney,Mouse heart,Mouse thymus
细胞定位	Nucleus,Nucleus speckle,nucleoplasm
纯化	Affinity purification

抗原信息

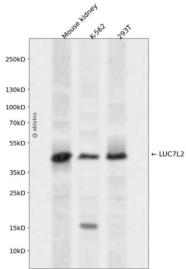
抗原信息	Recombinant fusion protein containing a sequence corresponding to amino acids 313-392 of human LUC7L2 (NP_057103.2).
序列	SRSHQSRHSSRDRSRERSKRRSSKERFRDQDLASCDRDRSSRDRSPRDRDRKDKKRSYESANGRSEDRRSSEEREA GEI

靶点信息

研究背景	This gene encodes a protein that contains a C2H2-type zinc finger, coiled-coil region and arginine, serine-rich (RS) domain. A similar protein in mouse interacts with sodium channel modifier 1, and the encoded protein may be involved in the recognition of non-consensus splice donor sites in association with the U1 snRNP spliceosomal subunit. Alternatively spliced transcript variants encoding multiple isoforms have been observed for this gene.
基因ID	51631

基因名	LUC7L2
Swiss	Q9Y383
别名	LUC7L2;CGI-59;CGI-74;LUC7B2;LUC7 like 2

产品验证



Western blot analysis of LUC7L2 expressed in Mouse kidney, K-562, 293T using LUC7L2 Rabbit pAb at 1:1000. Secondary antibody: HRP Goat Anti-Rabbit IgG (H+L) at 1:5000. Lysates/proteins: 30ug per lane. Blocking buffer: 5% non-fat dry milk in TBST. Detection: ECL Enhanced Kit. Exposure time: 120s.

实验步骤

访问官网浏览详情: www.ablybio.cn