

# ERRFI1 Rabbit pAb

货号: **AYP19475**

## 产品信息

反应	Rat
宿主	Rabbit
克隆性	Polyclonal
预测反应	
应用	WB
推荐浓度	<b>WB:</b> 1:500 - 1:2000
理论分子量	50kDa
实测分子量	50kDa
形式	Liquid
保存条件	Store at -20°C. Avoid freeze / thaw cycles. Buffer: PBS with 0.01% thiomersal,50% glycerol,pH7.3.
偶联物	Unconjugated
阳性对照	Rat lung
细胞定位	Cell membrane,Cytoplasm,Cytoplasmic side,Nucleus,Peripheral membrane protein
纯化	Affinity purification

## 抗原信息

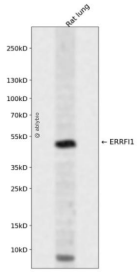
抗原信息	Recombinant fusion protein containing a sequence corresponding to amino acids 223-462 of human ERRF I1 (NP_061821.1).
序列	SYVSDQNGGVDPNPPPPQTHRRLLRRSHSGPAGSFNKP AIRISNCCIH RASPNSDEDKPEVPPRVPIPPRPVKPDYRRWSA EVTSSSTYSDEDRPPKVPPREPLSPNSRTPSPKSLPSYLVMPPTQSFAPDPKYVSSKALQRQNSEGSASKVPCILPIIEN GKKVSSSTHYLLPERPPYLDKYEKFFREAEETNGGAQIQPLPADCGISSATEKPDSTKMDLGGHVKRKHL SYVVSP

## 靶点信息

研究背景	
基因ID	54206
基因名	ERRFI1

Swiss	Q9UJM3
别名	ERRFI1;GENE-33;MIG-6;MIG6;RALT

## 产品验证



Western blot analysis of ERRFI1 expressed in Rat lung using ERRFI1 Rabbit pAb at 1:1000. Secondary anti body: HRP Goat Anti-Rabbit IgG (H+L) at 1:5000. Lysates/proteins: 30ug per lane. Blocking buffer: 5% no n-fat dry milk in TBST. Detection: ECL Enhanced Kit. Exposure time: 120s.

## 实验步骤

访问官网浏览详情: [www.ablybio.cn](http://www.ablybio.cn)