

LRRC7 Rabbit pAb

货号: **AYP19472**

产品信息

反应	Human,Mouse,Rat
宿主	Rabbit
克隆性	Polyclonal
预测反应	
应用	WB IF/ICC
推荐浓度	WB: 1:500 - 1:2000 IF/ICC: 1:50 - 1:200
理论分子量	20kDa/167kDa/172kDa
实测分子量	172kDa
形式	Liquid
保存条件	Store at -20°C. Avoid freeze / thaw cycles. Buffer: PBS with 0.01% thiomersal,50% glycerol,pH7.3.
偶联物	Unconjugated
阳性对照	Mouse brain,Rat brain
细胞定位	Cell junction,Cytoplasm,postsynaptic cell membrane,postsynaptic density,synapse
纯化	Affinity purification

抗原信息

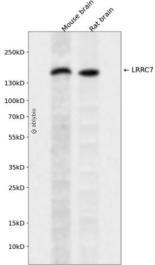
抗原信息	Recombinant fusion protein containing a sequence corresponding to amino acids 730-890 of human LRRC 7 (NP_065845.1).
序列	FPQPLDSKPLLSQREAVPPGNIPQRPDRLPMSDTFTDNWTDGSHYDNTGFVAEETTAENANSNPLLSSKSRSTSSHGRR PLIRQDRIVGVPLELEQSTHRHTPETEVPPSNPWQNWTRTPSPFEDRTAFPSKLETTPTTSPLPERKEHIKESTEIPSPFSP

靶点信息

研究背景	Required for normal synaptic spine architecture and function. Necessary for DISC1 and GRM5 localization to postsynaptic density complexes and for both N-methyl D-aspartate receptor-dependent and metabotropic glutamate receptor-dependent long term depression.
基因ID	57554

基因名	LRRC7
Swiss	Q96NW7
别名	LRRC7;DENSIN

产品验证



Western blot analysis of LRRC7 expressed in Mouse brain,Rat brain using LRRC7 Rabbit pAb at 1:1000. Secondary antibody: HRP Goat Anti-Rabbit IgG (H+L) at 1:5000. Lysates/proteins: 30ug per lane. Blocking buffer: 5% non-fat dry milk in TBST. Detection: ECL Enhanced Kit. Exposure time: 120s.

实验步骤

访问官网浏览详情: www.ablybio.cn