

# RCC2 Rabbit pAb

货号: **AYP19467**

## 产品信息

反应	Human
宿主	Rabbit
克隆性	Polyclonal
预测反应	
应用	WB
推荐浓度	<b>WB:</b> 1:500 - 1:2000
理论分子量	56kDa
实测分子量	55kDa
形式	Liquid
保存条件	Store at -20°C. Avoid freeze / thaw cycles. Buffer: PBS with 0.01% thiomersal, 50% glycerol, pH7.3.
偶联物	Unconjugated
阳性对照	U-87MG, Jurkat
细胞定位	Chromosome, Cytoplasm, Nucleus, centromere, cytoskeleton, nucleolus, spindle
纯化	Affinity purification

## 抗原信息

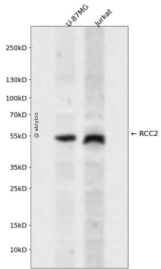
抗原信息	Recombinant fusion protein containing a sequence corresponding to amino acids 323-522 of human RCC2 (NP_001129676.1).
序列	QILPVPNVVVRDVACGANHTLVLDSQKRVFSWGGYGRGLGHAEQKDEMVPRLVKLDFPGRGASQIYAGYTCSFAVSE VGGLFFWGATNTSRESTMYPKAVQDLGWRIRSLACGKSSIIVAADESTISWGPSPTFGELGYGDHKPKSSTAAQEVKTL DGIFSEQVAMGYSHSLVIARDESETEKEKIKKLPEYNPRTL

## 靶点信息

研究背景	The protein encoded by this gene is a guanine exchange factor that is active on Ra1A, a small GTPase. The encoded protein and Ra1A are both essential for proper kinetochore-microtubule function in early mitosis. This protein has been shown to be a biomarker for colorectal cancer.
基因ID	55920

基因名	RCC2
Swiss	Q9P258
别名	RCC2;TD-60

## 产品验证



Western blot analysis of RCC2 expressed in U-87MG, Jurkat using RCC2 Rabbit pAb at 1:1000. Secondary antibody: HRP Goat Anti-Rabbit IgG (H+L) at 1:5000. Lysates/proteins: 30ug per lane. Blocking buffer: 5% non-fat dry milk in TBST. Detection: ECL Enhanced Kit. Exposure time: 120s.

## 实验步骤

访问官网浏览详情: [www.ablybio.cn](http://www.ablybio.cn)