

TINAGL1 Rabbit pAb

货号: **AYP19464**

产品信息

反应	Human,Mouse,Rat
宿主	Rabbit
克隆性	Polyclonal
预测反应	
应用	WB IF/ICC
推荐浓度	WB: 1:500 - 1:2000 IF/ICC: 1:50 - 1:200
理论分子量	30kDa/48kDa/52kDa
实测分子量	52kDa
形式	Liquid
保存条件	Store at -20°C. Avoid freeze / thaw cycles. Buffer: PBS with 0.01% thiomersal,50% glycerol,pH7.3.
偶联物	Unconjugated
阳性对照	Mouse heart,Rat heart
细胞定位	Secreted
纯化	Affinity purification

抗原信息

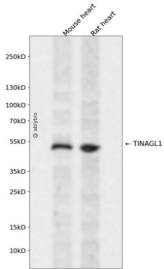
抗原信息	Recombinant fusion protein containing a sequence corresponding to amino acids 258-467 of human TINA GL1 (NP_071447.1).
序列	NLLSCDTHQQGCRGGRLDGAWWFLLRRRGVSDHCYPFSGRERDEAGPAPPCMMHSRAMGRGKRQATAHCPNSYV NNNDIYQVTPVYRLGSNDKEIMKELMENGPVQALMEVHEDFFLYKGGIYSHTPVSLGRPERYRRHGTHSVKITGWGEETLP DGRTLKYWTAANSWGPWGERGHFRIVRGVNECDIESFVLGVWGRVGMEDMGHH

靶点信息

研究背景	The protein encoded by this gene is similar in sequence to tubulointerstitial nephritis antigen, a secreted glycoprotein that is recognized by antibodies in some types of immune-related tubulointerstitial nephritis. Three transcript variants encoding different isoforms have been found for this gene.
基因ID	64129

基因名	TINAGL1
Swiss	Q9GZM7
别名	TINAGL1;ARG1;LCN7;LIECG3;TINAGRP

产品验证



Western blot analysis of TINAGL1 expressed in Mouse heart,Rat heart using TINAGL1 Rabbit pAb at 1:1000. Secondary antibody: HRP Goat Anti-Rabbit IgG (H+L) at 1:5000. Lysates/proteins: 30ug per lane. Blocking buffer: 5% non-fat dry milk in TBST. Detection: ECL Enhanced Kit. Exposure time: 120s.

实验步骤

访问官网浏览详情: www.ablybio.cn