

KIRREL2 Rabbit pAb

货号: **AYP19461**

产品信息

反应	Human,Mouse,Rat
宿主	Rabbit
克隆性	Polyclonal
预测反应	
应用	WB
推荐浓度	WB: 1:1000 - 1:2000
理论分子量	23kDa/61kDa/67kDa/75kDa
实测分子量	95kDa
形式	Liquid
保存条件	Store at -20°C. Avoid freeze / thaw cycles. Buffer: PBS with 0.01% thiomersal,50% glycerol,pH7.3.
偶联物	Unconjugated
阳性对照	Mouse kidney,Rat kidney
细胞定位	Cell membrane,Single-pass type I membrane protein
纯化	Affinity purification

抗原信息

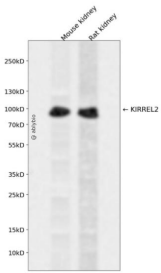
抗原信息	Recombinant fusion protein containing a sequence corresponding to amino acids 21-220 of human KIRREL2 (NP_954649.3).
序列	GPSPHFLQQPEDLVLLGEEARLPCALGAYWGLVQWTKSGLALGGQRDLPGWSRYWISGNAANGQHDHLHIRPVELEDE ASYECQATQAGLRSPAPQLHVLVPEAPQVLGGPSVSLVAGVPANLTCRSRGDARPTPELLWFRDGVLLDGATFHQTLLK EGTPGSVESTLTLTPFSHDDGATFVCRARSQALPTGRDTAIT

靶点信息

研究背景	This gene encodes a type I transmembrane protein and member of the immunoglobulin superfamily of cell adhesion molecules. The encoded protein localizes to adherens junctions in pancreatic beta cells and regulates insulin secretion. Autoantibodies against the encoded protein have been detected in serum from patients with type 1 diabetes. This gene may also play a role in glomerular development and decreased expression of this gene has been observed in human glomerular diseases. This gene and the related opposite-strand gene nephrin (GeneID: 527362) are regulated by a bidirectional promoter.
------	--

基因ID	84063
基因名	KIRREL2
Swiss	Q6UWL6
别名	KIRREL2;FILTRIN;NEPH3;NLG1

产品验证



Western blot analysis of KIRREL2 expressed in Mouse kidney,Rat kidney using KIRREL2 Rabbit pAb at 1:10 00. Secondary antibody: HRP Goat Anti-Rabbit IgG (H+L) at 1:5000. Lysates/proteins: 30ug per lane. Blocking buffer: 5% non-fat dry milk in TBST. Detection: ECL Enhanced Kit. Exposure time: 120s.

实验步骤

访问官网浏览详情: www.ablybio.cn