

aaaaaASPH Rabbit pAb

货号: **AYP19452**

产品信息

反应	Human
宿主	Rabbit
克隆性	Polyclonal
预测反应	
应用	WB
推荐浓度	WB: 1:500 - 1:2000
理论分子量	21-34kDa/83-85kDa
实测分子量	86kDa
形式	Liquid
保存条件	Store at -20°C. Avoid freeze / thaw cycles. Buffer: PBS with 0.01% thiomersal,50% glycerol,pH7.3.
偶联物	Unconjugated
阳性对照	A-549,HT-29
细胞定位	Endoplasmic reticulum membrane,Sarcoplasmic reticulum membrane,Single-pass type II membrane protein
纯化	Affinity purification

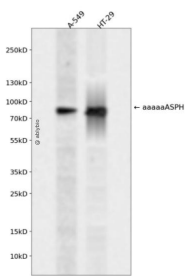
抗原信息

抗原信息	Recombinant fusion protein containing a sequence corresponding to amino acids 111-270 of human ASPH (NP_001158227.1).
序列	ERSTSEPAVPPEEAEPHTEPEEQVPVEAEPQNIEDAKEQIQSLLHEMVHAEHETEHSYHVEETVSQDCNQDMEEMMSEQ ENPDSSEPVVEDERLHHDTDDVTYQVYEEQAVYEPLENEGIEITEVTAPPEDNPVEDSQVIVEEVSIQVVEEQEVPPDT

靶点信息

研究背景	This gene is thought to play an important role in calcium homeostasis. The gene is expressed from two promoters and undergoes extensive alternative splicing. The encoded set of proteins share varying amounts of overlap near their N-termini but have substantial variations in their C-terminal domains resulting in distinct functional properties. The longest isoforms (a and f) include a C-terminal Aspartyl/Asparaginyl beta-hydroxylase domain that hydroxylates aspartic acid or asparagine residues in the epidermal growth factor (EGF)-like domains of some proteins, including protein C, coagulation factors VII, IX, and X, and the complement factors C1R and C1S. Other isoforms differ primarily in the C-terminal sequence and lack the hydroxylase domain, and some have been localized to the endoplasmic and sarcoplasmic reticulum. Some of these isoforms are found in complexes with calsequestrin, triadin, and the ryanodine receptor, and have been shown to regulate calcium release from the sarcoplasmic reticulum. Some isoforms have been implicated in metastasis.
基因ID	444
基因名	ASPH
Swiss	Q12797
别名	ASPH;AAH;BAH;CASQ2BP1;FDLAB;HAAH;JCTN;junctin

产品验证



Western blot analysis of aaaaaASPH expressed in A-549,HT-29 using aaaaaASPH Rabbit pAb at 1:1000. Secondary antibody: HRP Goat Anti-Rabbit IgG (H+L) at 1:5000. Lysates/proteins: 30ug per lane. Blocking buffer: 5% non-fat dry milk in TBST. Detection: ECL Enhanced Kit. Exposure time: 120s.

实验步骤

访问官网浏览详情: www.ablybio.cn