

DNASE1L1 Rabbit pAb

货号: **AYP19451**

产品信息

反应	Mouse,Rat
宿主	Rabbit
克隆性	Polyclonal
预测反应	
应用	WB IF/ICC
推荐浓度	WB: 1:500 - 1:2000 IF/ICC: 1:50 - 1:200
理论分子量	33kDa
实测分子量	34kDa
形式	Liquid
保存条件	Store at -20°C. Avoid freeze / thaw cycles. Buffer: PBS with 0.01% thiomersal,50% glycerol,pH7.3.
偶联物	Unconjugated
阳性对照	Mouse heart
细胞定位	Endoplasmic reticulum
纯化	Affinity purification

抗原信息

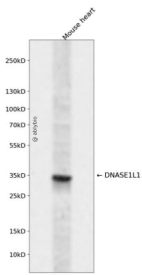
抗原信息	Recombinant fusion protein containing a sequence corresponding to amino acids 1-302 of human DNASE 1L1 (NP_006721.1).
序列	MHYPTALLFLILANGAQAFRICAFAAQRLLAKVAREQVMDTLVRILARCDIMVLQEVVDSSGSAIPLLLRELNRFDGGSPYS TLSSPQLGRSTYMETYVYFYRSHKTQVLSSYVYNDEDDVFAREPFVAQFSLPSNVLPSSLVPLHTTPKAVEKELNALYDVF LEVSQHWQSKDVILLGDFNADCASLTKRRLDKLELRTEPGFHWVIADGEDTTVRASTHCTYDRVVLHGRCRSLHTAA A FDFPTSFQLTEEEALNISDHYPVEVELKLSQAHSVQPLSLTVLLLLLLSPQLCPAA

靶点信息

研究背景	This gene encodes a deoxyribonuclease protein that shows high sequence similarity to DNase I. The encoded protein is localized to the endoplasmic reticulum and modified by N-linked glycosylation. Alternate transcriptional splice variants encoding the same protein have been observed.
------	---

基因ID	1774
基因名	DNASE1L1
Swiss	P49184
别名	DNASE1L1;DNAS1L1;DNASEX;DNL1L;G4.8;XIB

产品验证



Western blot analysis of DNASE1L1 expressed in Mouse heart using DNASE1L1 Rabbit pAb at 1:1000. Secondary antibody: HRP Goat Anti-Rabbit IgG (H+L) at 1:5000. Lysates/proteins: 30ug per lane. Blocking buffer: 5% non-fat dry milk in TBST. Detection: ECL Enhanced Kit. Exposure time: 120s.

实验步骤

访问官网浏览详情: www.ablybio.cn