

ZFYVE16 Rabbit pAb

货号: **AYP19449**

产品信息

反应	Human
宿主	Rabbit
克隆性	Polyclonal
预测反应	
应用	WB
推荐浓度	WB: 1:1000 - 1:2000
理论分子量	166kDa
实测分子量	169kDa
形式	Liquid
保存条件	Store at -20°C. Avoid freeze / thaw cycles. Buffer: PBS with 0.01% thiomersal, 50% glycerol, pH7.3.
偶联物	Unconjugated
阳性对照	HeLa
细胞定位	Cytoplasm, Early endosome membrane, Peripheral membrane protein
纯化	Affinity purification

抗原信息

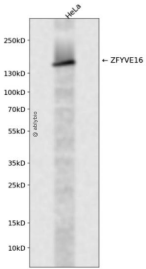
抗原信息	Recombinant fusion protein containing a sequence corresponding to amino acids 1-300 of mouse ZFYVE16 (NP_775568.1).
序列	MDSYFKA AVSGLDKLLDDFEQNPDKQDYLPDAYAFNQCSVSESASPQLALLSKDQRCISTCASSEACCEDANETFLEGGK IHEGLTSRPNEKNVAGLDLLSSVDASTSDEIQPSCMRRCSKPVCDLISDMGNLVHATNSEEDIKQLLPDDPKSSADTLITLD SSSVSEALTVSSVDCGSNAVREEQNINAGIKNRDISIKELGVKVDMALFDSCYNRTENLKDKIISNELETVD FDMPSVLM EQSSEMSNTKDNPQYKRLPCELLKDDGCLAEEKVAVAVNNTTECLEEGGGSNTIAMP

靶点信息

研究背景	This gene encodes an endosomal protein that belongs to the FYVE zinc finger family of proteins. The encoded protein is thought to regulate membrane trafficking in the endosome. This protein functions as a scaffold protein in the transforming growth factor-beta signaling pathway and is involved in positive and negative feedback regulation of the bone morphogenetic protein signaling pathway. Alternate splicing results in multiple transcript variants.
------	----------------------------------------------------------------------------------------------------------------------------------------------------------------------------------------------------------------------------------------------------------------------------------------------------------------------------------------------------------------------------------------------------------------------------------------------------------------------

基因ID	218441
基因名	
Swiss	
别名	ZFYVE16;PPP1R69

产品验证



Western blot analysis of ZFYVE16 expressed in HeLa using ZFYVE16 Rabbit pAb at 1:1000. Secondary anti body: HRP Goat Anti-Rabbit IgG (H+L) at 1:5000. Lysates/proteins: 30ug per lane. Blocking buffer: 5% no n-fat dry milk in TBST. Detection: ECL Enhanced Kit. Exposure time: 120s.

实验步骤

访问官网浏览详情: www.ablybio.cn