

RD3 Rabbit pAb

货号: **AYP19445**

产品信息

反应	Mouse,Rat
宿主	Rabbit
克隆性	Polyclonal
预测反应	
应用	WB
推荐浓度	WB: 1:500 - 1:1000
理论分子量	22kDa
实测分子量	26kDa
形式	Liquid
保存条件	Store at -20°C. Avoid freeze / thaw cycles. Buffer: PBS with 0.01% thiomersal,50% glycerol,pH7.3.
偶联物	Unconjugated
阳性对照	Mouse brain,Rat brain
细胞定位	cone photoreceptor outer segment,cytoplasm,endosome,nucleus,perinuclear region of cytoplasm,photoreceptor inner segment,photoreceptor outer segment,rod photoreceptor outer segment
纯化	Affinity purification

抗原信息

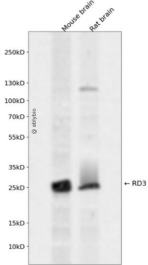
抗原信息	Recombinant fusion protein containing a sequence corresponding to amino acids 1-195 of human RD3 (NP_898882.1).
序列	MSLISWLRWNEAPSRLSTRSPAEMVLETLMELTGQMREAERQQRERSNAVRKVCTGVDYSWLASTPRSTYDLSPIERLQLEDVCVKIHPSYCGPAILRFRQLLAEQEPEVQEVSQLEFRSVLQEVLERMKQEEEAHKLTRQWLSLRPRGSLATFKTRARISPFASDIRTISEDVERDTPPPLRSWSMPEFRAPKAD

靶点信息

研究背景	This gene encodes a retinal protein that is associated with promyelocytic leukemia-gene product (PML) bodies in the nucleus. Mutations in this gene cause Leber congenital amaurosis type 12, a disease that results in retinal degeneration. Alternative splicing results in multiple transcript variants.
基因ID	343035

基因名	RD3
Swiss	Q7Z3Z2
别名	RD3;C1orf36;LCA12

产品验证



Western blot analysis of RD3 expressed in Mouse brain,Rat brain using RD3 Rabbit pAb at 1:1000. Secondary antibody: HRP Goat Anti-Rabbit IgG (H+L) at 1:5000. Lysates/proteins: 30ug per lane. Blocking buffer: 5% non-fat dry milk in TBST. Detection: ECL Enhanced Kit. Exposure time: 120s.

实验步骤

访问官网浏览详情: www.ablybio.cn