

GDF5 Rabbit pAb

货号: **AYP19443**

产品信息

反应	Mouse,Rat
宿主	Rabbit
克隆性	Polyclonal
预测反应	
应用	WB IHC
推荐浓度	WB: 1:500 - 1:2000 IHC: 1:50 - 1:200
理论分子量	55kDa
实测分子量	45kDa
形式	Liquid
保存条件	Store at -20°C. Avoid freeze / thaw cycles. Buffer: PBS with 0.01% thiomersal,50% glycerol,pH7.3.
偶联物	Unconjugated
阳性对照	Mouse heart,Rat heart
细胞定位	Cell membrane,Secreted
纯化	Affinity purification

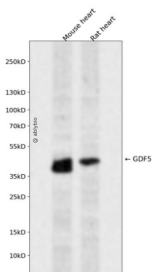
抗原信息

抗原信息	A synthetic peptide corresponding to a sequence within amino acids 350-450 of human GDF5 (NP_000548.2).
序列	KRDLFFNEIKARSGQDDKTVYEYLFSSQRRKRRAPLATRQGKRPSKNLKARCSRKALHVNFKDMGWDDWIIAPLEYEAFHC EGLCEFPLRSHLEPTNHAVIQ

靶点信息

研究背景	This gene encodes a secreted ligand of the TGF-beta (transforming growth factor-beta) superfamily of proteins. Ligands of this family bind various TGF-beta receptors leading to recruitment and activation of SMAD family transcription factors that regulate gene expression. The encoded preproprotein is proteolytically processed to generate each subunit of the disulfide-linked homodimer. This protein regulates the development of numerous tissue and cell types, including cartilage, joints, brown fat, teeth, and the growth of neuronal axons and dendrites. Mutations in this gene are associated with acromesomelic dysplasia, brachydactyly, chondrodysplasia, multiple synostoses syndrome, proximal symphalangism, and susceptibility to osteoarthritis.
基因ID	8200
基因名	GDF5
Swiss	P43026
别名	GDF5;BDA1C;BMP-14;BMP14;CDMP1;LAP-4;LAP4;OS5;SYM1B;SYNS2

产品验证



Western blot analysis of GDF5 expressed in Mouse heart,Rat heart using GDF5 Rabbit pAb at 1:1000. Secondary antibody: HRP Goat Anti-Rabbit IgG (H+L) at 1:5000. Lysates/proteins: 30ug per lane. Blocking buffer: 5% non-fat dry milk in TBST. Detection: ECL Enhanced Kit. Exposure time: 120s.

实验步骤

访问官网浏览详情: www.ablybio.cn