

SCYL2 Rabbit pAb

货号: **AYP19435**

产品信息

反应	Human,Mouse,Rat
宿主	Rabbit
克隆性	Polyclonal
预测反应	
应用	WB IF/ICC
推荐浓度	WB: 1:500 - 1:2000 IF/ICC: 1:50 - 1:200
理论分子量	103kDa
实测分子量	104kDa
形式	Liquid
保存条件	Store at -20°C. Avoid freeze / thaw cycles. Buffer: PBS with 0.01% thiomersal,50% glycerol,pH7.3.
偶联物	Unconjugated
阳性对照	Mouse brain,Mouse heart,Mouse kidney,Rat brain,Rat heart
细胞定位	Cytoplasm,Cytoplasmic vesicle,Endosome membrane,Golgi apparatus,clathrin-coated vesicle,perinuclear region,trans-Golgi network membrane
纯化	Affinity purification

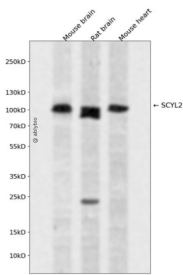
抗原信息

抗原信息	Recombinant fusion protein containing a sequence corresponding to amino acids 1-300 of human SCYL2 (NP_060458.3).
序列	MESMLNKLKSTVTKVTADVTSAVMGNPVTREFDVGRHIASGGNGLAWKIFNGTKKSTKQEVAVFVFDKKLIDKYQKFEK DQIIDSLKRGVQQLTRLRHPRLLTVQHPLEESRDCLAFCTEPVFASLANVLGNWENLPSISPDIKDYKLYDVETKYGLLQVS EGLSFLHSSVKMVHGNITPENIILNKSGAWKIMGFDFCVSSTNPSEQEPKFPCKEWDPNLPSLCLPNPEYLAPEYILSVSCET ASDMYSLGTVMYAVFNKGKPIFEVKNQDIYKFSRQLDQLSRLGSSSLTNIPEEV

靶点信息

研究背景	The protein encoded by this gene associates with clathrin-coated complexes at the plasma membrane and with endocytic coated vesicles. The encoded protein phosphorylates the beta2 subunit of the plasma membrane adapter complex AP2 and interacts with clathrin, showing involvement in clathrin-dependent pathways between the trans-Golgi network and the endosomal system. In addition, this protein has a role in the Wnt signaling pathway by targeting frizzled 5 (Fzd5) for lysosomal degradation. Two transcript variants encoding the same protein have been found for this gene.
基因ID	55681
基因名	SCYL2
Swiss	Q6P3W7
别名	SCYL2;CVAK104

产品验证



Western blot analysis of SCYL2 expressed in Mouse brain, Rat brain, Mouse heart using SCYL2 Rabbit pAb at 1:1000. Secondary antibody: HRP Goat Anti-Rabbit IgG (H+L) at 1:5000. Lysates/proteins: 30ug per lane. Blocking buffer: 5% non-fat dry milk in TBST. Detection: ECL Enhanced Kit. Exposure time: 120s.

实验步骤

访问官网浏览详情: www.ablybio.cn