

MRPL45 Rabbit pAb

货号: **AYP19427**

产品信息

反应	Human,Mouse,Rat
宿主	Rabbit
克隆性	Polyclonal
预测反应	
应用	WB IHC IF/ICC
推荐浓度	WB: 1:500 - 1:2000 IHC: 1:50 - 1:200 IF/ICC: 1:50 - 1:200
理论分子量	35kDa
实测分子量	35kDa
形式	Liquid
保存条件	Store at -20°C. Avoid freeze / thaw cycles. Buffer: PBS with 0.01% thiomersal,50% glycerol,pH7.3.
偶联物	Unconjugated
阳性对照	U-87MG,OVCAR3,293T,Mouse brain,Mouse heart,Mouse kidney,Mouse liver,Mouse spleen,Rat brain
细胞定位	Mitochondrion
纯化	Affinity purification

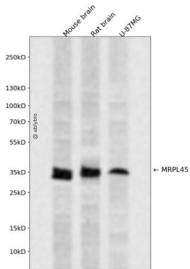
抗原信息

抗原信息	Recombinant fusion protein containing a sequence corresponding to amino acids 57-306 of human MRPL45 (NP_115727.5).
序列	MQHARKAGLVIPPEKSDRSIHLACTAGIFDAYVPPEGDARISSLSKEGLIERTERMKKTMASQVSIIRRIKDYDANFKIKDFPE KAKDIFIEAHLCLNNSDHDRLHTLVTEHCFDMDTWDIKYKTVRWSFVESLEPSHVVQVRCSSMMNQGNVYGQITVRMHT RQTLAIYDRFRGLMYGQEDVPKDVLLEYVVFEEKLTNPYGSWRMHTKIVPPWAPPKQPILKTMIPGPQLKPEEEYEEAQGE AQKPQLA

靶点信息

研究背景	Mammalian mitochondrial ribosomal proteins are encoded by nuclear genes and help in protein synthesis within the mitochondrion. Mitochondrial ribosomes (mitoribosomes) consist of a small 28S subunit and a large 39S subunit. They have an estimated 75% protein to rRNA composition compared to prokaryotic ribosomes, where this ratio is reversed. Another difference between mammalian mitoribosomes and prokaryotic ribosomes is that the latter contain a 5S rRNA. Among different species, the proteins comprising the mitoribosome differ greatly in sequence, and sometimes in biochemical properties, which prevents easy recognition by sequence homology. This gene encodes a 39S subunit protein. Alternative splicing results in multiple transcript variants. Pseudogenes corresponding to this gene are found on chromosomes 2p and 17q.
基因ID	84311
基因名	
Swiss	Q9BRJ2
别名	MRPL45;L45mt;MRP-L45

产品验证



Western blot analysis of MRPL45 expressed in Mouse brain, Rat brain, U-87MG using MRPL45 Rabbit pAb at 1:1000. Secondary antibody: HRP Goat Anti-Rabbit IgG (H+L) at 1:5000. Lysates/proteins: 30ug per lane. Blocking buffer: 5% non-fat dry milk in TBST. Detection: ECL Enhanced Kit. Exposure time: 120s.

实验步骤

访问官网浏览详情: www.ablybio.cn