

CRISPLD2 Rabbit pAb

货号: **AYP19425**

产品信息

反应	Mouse,Rat
宿主	Rabbit
克隆性	Polyclonal
预测反应	
应用	WB
推荐浓度	WB: 1:500 - 1:2000
理论分子量	13kDa/17kDa/42kDa/51kDa/55kDa
实测分子量	56kDa
形式	Liquid
保存条件	Store at -20°C. Avoid freeze / thaw cycles. Buffer: PBS with 0.01% thiomersal,50% glycerol,pH7.3.
偶联物	Unconjugated
阳性对照	Mouse kidney,Mouse pancreas,Rat pancreas
细胞定位	Secreted
纯化	Affinity purification

抗原信息

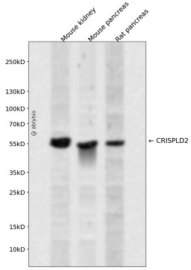
抗原信息	Recombinant fusion protein containing a sequence corresponding to amino acids 140-430 of human CRISPLD2 (NP_113664.1).
序列	YPYPSECNPWCPERCSGPMCTHYTQIVWATTNKIGCAVNTCRKMTVWGEVWENAVYFVCNYSKGNWIGEAPYKNGRP CSECPPSYGGSCRNNLCYREETYTPKPETDEMNEVETAPIPEENHVWLQPRVMRPTKPKKTSAVNYMTQVVRCDTKMKDR CKGSTCNRYQCPAGCLNHKAKIFGTLFYESSSSICRAAIHYGILDDKGGLVDITRNGKVPFFVKSERHGVQSLSKYKPSSSF MVSKVQVQDLDCYTTVAQLCPFEKPATHCPRIHCPAHCKDEPSYWAPVFGT

靶点信息

研究背景	Promotes matrix assembly.
基因ID	83716
基因名	CRISPLD2

Swiss	Q9H0B8
别名	CRISPLD2;CRISP11;LCRISP2;LGL1

产品验证



Western blot analysis of CRISPLD2 expressed in Mouse kidney, Mouse pancreas, Rat pancreas using CRISPLD2 Rabbit pAb at 1:1000. Secondary antibody: HRP Goat Anti-Rabbit IgG (H+L) at 1:5000. Lysates/proteins: 30ug per lane. Blocking buffer: 5% non-fat dry milk in TBST. Detection: ECL Enhanced Kit. Exposure time: 120s.

实验步骤

访问官网浏览详情: www.ablybio.cn