

GLE1 Rabbit pAb

货号: **AYP19417**

产品信息

反应	Mouse,Rat
宿主	Rabbit
克隆性	Polyclonal
预测反应	
应用	WB
推荐浓度	WB: 1:1000 - 1:2000
理论分子量	75kDa/79kDa
实测分子量	80kDa
形式	Liquid
保存条件	Store at -20°C. Avoid freeze / thaw cycles. Buffer: PBS with 0.01% thiomersal,50% glycerol,pH7.3.
偶联物	Unconjugated
阳性对照	Mouse spleen,Mouse liver
细胞定位	Cytoplasm,Cytoplasm,Nucleus,nuclear pore complex
纯化	Affinity purification

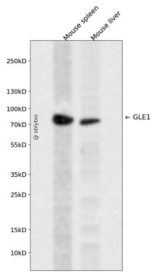
抗原信息

抗原信息	Recombinant fusion protein containing a sequence corresponding to amino acids 1-300 of human GLE1 (NP_001003722.1).
序列	MPSEGRCWETLKALRSSDKGRLCYRDWLLRREDVLEECMSLPKLSYSGWVVEHVLPHMQENQPLSETSPSSTSASAL DQPSFVPKSPDASSAFSPASPATPNGTKGKDESQHTESMVLQSSRGIKVEGCVRMYELVHRMKGTEGLRLWQEEQERK VQALSEMASEQLKRFDEWKELKQHKEFQDLREVMEKSSREALGHQEKLKAEHRHRAKILNLKLRQAEQQRVKQAEQERLR KEEGQIRLRALYALQEEMQLSQQLDASEQHKALLKVDLAAFQTRGNQLCSLISGIIRASSES

靶点信息

研究背景	This gene encodes a predicted 75-kDa polypeptide with high sequence and structure homology to yeast Gle1p, which is nuclear protein with a leucine-rich nuclear export sequence essential for poly(A)+RNA export. Inhibition of human GLE1L by microinjection of antibodies against GLE1L in HeLa cells resulted in inhibition of poly(A)+RNA export. Immunofluorescence studies show that GLE1L is localized at the nuclear pore complexes. This localization suggests that GLE1L may act at a terminal step in the export of mature RNA messages to the cytoplasm. Two alternatively spliced transcript variants encoding different isoforms have been found for this gene.
基因ID	2733
基因名	GLE1
Swiss	Q53GS7
别名	GLE1;GLE1L;LCCS;LCCS1;hGLE1

产品验证



Western blot analysis of GLE1 expressed in Mouse spleen, Mouse liver using GLE1 Rabbit pAb at 1:1000. Secondary antibody: HRP Goat Anti-Rabbit IgG (H+L) at 1:5000. Lysates/proteins: 30ug per lane. Blocking buffer: 5% non-fat dry milk in TBST. Detection: ECL Enhanced Kit. Exposure time: 120s.

实验步骤

访问官网浏览详情: www.ablybio.cn