

# SLC14A2 Rabbit pAb

货号: **AYP19416**

## 产品信息

反应	Human,Mouse
宿主	Rabbit
克隆性	Polyclonal
预测反应	
应用	WB
推荐浓度	<b>WB:</b> 1:500 - 1:2000
理论分子量	43kDa/101kDa
实测分子量	101kDa
形式	Liquid
保存条件	Store at -20°C. Avoid freeze / thaw cycles. Buffer: PBS with 0.01% thiomersal,50% glycerol,pH7.3.
偶联物	Unconjugated
阳性对照	293T,K-562,LO2,Mouse testis,Mouse brain
细胞定位	Apical cell membrane,Multi-pass membrane protein
纯化	Affinity purification

## 抗原信息

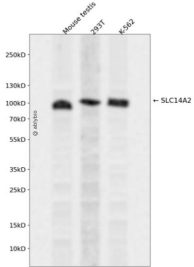
抗原信息	Recombinant fusion protein containing a sequence corresponding to amino acids 420-580 of human SLC14A2 (NP_009094.3).
序列	FRLPLSKVTYPEANRIYYLTVKSGEEEEKAPSGGGGGEHPPTAGPKVEEGSEAVLSKHRSVFHIEWSSIRRRRSKVFGEHQERQNKDPFPYRYRKPTVELLDLDTMEESSEIKVETNISKTSWIRSSMAASGKRVS KALS YITGEMKECGEGLKDKSPVFQF

## 靶点信息

研究背景	The protein encoded by this gene belongs to the urea transporter family. In mammalian cells, urea is the chief end product of nitrogen catabolism, and plays an important role in the urinary concentration mechanism. This protein is expressed in the inner medulla of the kidney, and mediates rapid transepithelial urea transport across the inner medullary collecting duct. Alternatively spliced transcript variants have been found for this gene.
基因ID	8170

基因名	SLC14A2
Swiss	Q15849
别名	SLC14A2;HUT2;UT-A2;UT2;UTA;UTR;hUT-A6

## 产品验证



Western blot analysis of SLC14A2 expressed in Mouse testis,293T,K-562 using SLC14A2 Rabbit pAb at 1:1000. Secondary antibody: HRP Goat Anti-Rabbit IgG (H+L) at 1:5000. Lysates/proteins: 30ug per lane. Blocking buffer: 5% non-fat dry milk in TBST. Detection: ECL Enhanced Kit. Exposure time: 120s.

## 实验步骤

访问官网浏览详情: [www.ablybio.cn](http://www.ablybio.cn)