

SIAE Rabbit pAb

货号: **AYP19410**

产品信息

反应	Human
宿主	Rabbit
克隆性	Polyclonal
预测反应	
应用	WB
推荐浓度	WB: 1:500 - 1:2000
理论分子量	54kDa/58kDa
实测分子量	58kDa
形式	Liquid
保存条件	Store at -20°C. Avoid freeze / thaw cycles. Buffer: PBS with 0.01% thiomersal, 50% glycerol, pH7.3.
偶联物	Unconjugated
阳性对照	22Rv1, LO2
细胞定位	Lysosome, Secreted
纯化	Affinity purification

抗原信息

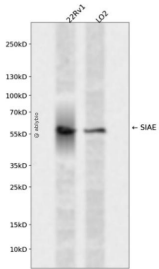
抗原信息	Recombinant fusion protein containing a sequence corresponding to amino acids 270-450 of human SIAE (NP_733746.1).
序列	LKGVVWYQGESNINYNTDLYNCTFPALIEDWRETFHRGSQGQTERFFPFLVQLSSDLSKSSDDGFPQIRWHQTADFG YVPNPKMPNTFMAMVAMDLCDRDSFPGSIHPRDKQTVAYRLHLGARALAYGEKNLTFEGPLPEKIELLAHKGLLNLTYYQIQVQKKDNKIFEISCCSDHRCK

靶点信息

研究背景	This gene encodes an enzyme which removes 9-O-acetylation modifications from sialic acids. Mutations in this gene are associated with susceptibility to autoimmune disease 6. Multiple transcript variants encoding different isoforms, found either in the cytosol or in the lysosome, have been found for this gene.
基因ID	54414

基因名	SIAE
Swiss	Q9HAT2
别名	SIAE;AIS6;CSE-C;CSEC;LSE;YSG2

产品验证



Western blot analysis of SIAE expressed in 22Rv1,LO2 using SIAE Rabbit pAb at 1:1000. Secondary antibody: HRP Goat Anti-Rabbit IgG (H+L) at 1:5000. Lysates/proteins: 30ug per lane. Blocking buffer: 5% non-fat dry milk in TBST. Detection: ECL Enhanced Kit. Exposure time: 120s.

实验步骤

访问官网浏览详情: www.ablybio.cn