

SLC25A38 Rabbit pAb

货号: **AYP19405**

产品信息

反应	Human,Mouse
宿主	Rabbit
克隆性	Polyclonal
预测反应	
应用	WB IF/ICC
推荐浓度	WB: 1:500 - 1:2000 IF/ICC: 1:50 - 1:200
理论分子量	33kDa
实测分子量	33kDa
形式	Liquid
保存条件	Store at -20°C. Avoid freeze / thaw cycles. Buffer: PBS with 0.01% thiomersal,50% glycerol,pH7.3.
偶联物	Unconjugated
阳性对照	293T
细胞定位	Mitochondrion inner membrane,Multi-pass membrane protein
纯化	Affinity purification

抗原信息

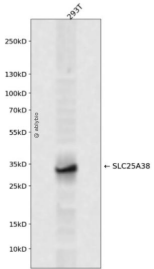
抗原信息	Recombinant fusion protein containing a sequence corresponding to amino acids 140-220 of human SLC25A38 (NP_060345.2).
序列	CMSPITVIKTRYESGKYGYESIYAALRSIYHSEGHRLFSGLTATLLRDAPFSGIYLMFYNQTKNIVPHDQVDATLIPITN

靶点信息

研究背景	This gene is a member of the mitochondrial carrier family. The encoded protein is required during erythropoiesis and is important for the biosynthesis of heme. Mutations in this gene are the cause of autosomal congenital sideroblastic anemia.
基因ID	54977

基因名	SLC25A38
Swiss	Q96DW6
别名	SLC25A38;SIDBA2

产品验证



Western blot analysis of SLC25A38 expressed in 293T using SLC25A38 Rabbit pAb at 1:1000. Secondary antibody: HRP Goat Anti-Rabbit IgG (H+L) at 1:5000. Lysates/proteins: 30ug per lane. Blocking buffer: 5% non-fat dry milk in TBST. Detection: ECL Enhanced Kit. Exposure time: 120s.

实验步骤

访问官网浏览详情: www.ablybio.cn