

CTAGE1 Rabbit pAb

货号: **AYP19401**

产品信息

反应	Human,Mouse,Rat
宿主	Rabbit
克隆性	Polyclonal
预测反应	
应用	WB
推荐浓度	WB: 1:1000 - 1:2000
理论分子量	8kDa/85kDa
实测分子量	85kDa
形式	Liquid
保存条件	Store at -20°C. Avoid freeze / thaw cycles. Buffer: PBS with 0.01% thiomersal,50% glycerol,pH7.3.
偶联物	Unconjugated
阳性对照	LO2,K-562,Mouse liver,Mouse heart,Rat liver
细胞定位	Membrane,Multi-pass membrane protein
纯化	Affinity purification

抗原信息

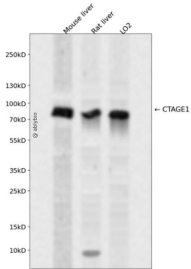
抗原信息	Recombinant fusion protein containing a sequence corresponding to amino acids 370-520 of human CTAGE1 (NP_758441.2).
序列	LIVEEKCRLEKEEKLSKVDDEMISHATEELETYRKRAKDLKEFEKTIHFYQKKIILHEKKAHDNWSAAWTAERNLNDLRKENAHNRQKLTEIEFKIKLLEKDPYGLDVPNTAFGRQHSPYGPSPLGWPSSETRASLYPPTLLEGPLRLSPLL

靶点信息

研究背景	Predicted to be involved in endoplasmic reticulum to Golgi vesicle-mediated transport; protein secretion; and vesicle cargo loading. Predicted to be integral component of membrane. Predicted to be active in endoplasmic reticulum exit site and endoplasmic reticulum membrane.
基因ID	64693

基因名	CTAGE1
Swiss	Q96RT6
别名	CTAGE1;CT21.1;CT21.2;CTAGE;CTAGE-1;CTAGE-2

产品验证



Western blot analysis of CTAGE1 expressed in Mouse liver,Rat liver,LO2 using CTAGE1 Rabbit pAb at 1:1000. Secondary antibody: HRP Goat Anti-Rabbit IgG (H+L) at 1:5000. Lysates/proteins: 30ug per lane. Blocking buffer: 5% non-fat dry milk in TBST. Detection: ECL Enhanced Kit. Exposure time: 120s.

实验步骤

访问官网浏览详情: www.ablybio.cn