

SYNE3 Rabbit pAb

货号: **AYP19397**

产品信息

| | |
|-------|--|
| 反应 | Human,Mouse |
| 宿主 | Rabbit |
| 克隆性 | Polyclonal |
| 预测反应 | |
| 应用 | WB IF/ICC |
| 推荐浓度 | WB: 1:500 - 1:2000 IF/ICC: 1:50 - 1:200 |
| 理论分子量 | 68kDa/111kDa/112kDa |
| 实测分子量 | 112kDa |
| 形式 | Liquid |
| 保存条件 | Store at -20°C. Avoid freeze / thaw cycles. Buffer: PBS with 0.01% thiomersal,50% glycerol,pH7.3. |
| 偶联物 | Unconjugated |
| 阳性对照 | Jurkat,K-562,LO2,HepG2 |
| 细胞定位 | Nucleus envelope,Nucleus outer membrane,Rough endoplasmic reticulum,Single-pass type IV membrane protein |
| 纯化 | Affinity purification |

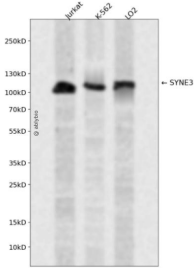
抗原信息

| | |
|------|--|
| 抗原信息 | Recombinant fusion protein containing a sequence corresponding to amino acids 740-920 of human SYNE 3 (NP_689805.3). |
| 序列 | LRLLAESLLSLIRNWHLQRMEVDSGKKMVFTNNIPKSGFLINPMDPIPRHRRRANLLQEEEGSHEDFSQLLRNFGQWLQVE NSKLVRIIAMRTSTAEDLRTRKSKLQLEEARVPEGQHLFENLLRLGPARGTSDLELDLRYQWMLYKSKLKDSGHLTQSSP GEPTGFQKTRRWRGLGSLF |

靶点信息

| | |
|-------|--|
| 研究背景 | As a component of the LINC (Linker of Nucleoskeleton and Cytoskeleton complex involved in the connection between the nuclear lamina and the cytoskeleton. The nucleocytoplasmic interactions established by the LINC complex play an important role in the transmission of mechanical forces across the nuclear envelope and in nuclear movement and positioning. Probable anchoring protein which tethers the nucleus to the cytoskeleton by binding PLEC which can associate with the intermediate filament system. Plays a role in the regulation of aortic epithelial cell morphology, and is required for flow-induced centrosome polarization and directional migration in aortic endothelial cells. |
| 基因ID | 161176 |
| 基因名 | SYNE3 |
| Swiss | Q6ZMZ3 |
| 别名 | SYNE3;C14orf139;C14orf49;KASH3;LINC00341;NCRNA00341;NET53;Nesp3;nesprin-3 |

产品验证



Western blot analysis of SYNE3 expressed in Jurkat, K-562, LO2 using SYNE3 Rabbit pAb at 1:1000. Secondary antibody: HRP Goat Anti-Rabbit IgG (H+L) at 1:5000. Lysates/proteins: 30ug per lane. Blocking buffer: 5% non-fat dry milk in TBST. Detection: ECL Enhanced Kit. Exposure time: 120s.

实验步骤

访问官网浏览详情: www.ablybio.cn