

SREK1 Rabbit pAb

货号: **AYP19395**

产品信息

反应	Human,Mouse
宿主	Rabbit
克隆性	Polyclonal
预测反应	
应用	WB
推荐浓度	WB: 1:500 - 1:2000
理论分子量	59kDa/71kDa
实测分子量	59kDa
形式	Liquid
保存条件	Store at -20°C. Avoid freeze / thaw cycles. Buffer: PBS with 0.01% thiomersal,50% glycerol,pH7.3.
偶联物	Unconjugated
阳性对照	MCF7,HeLa
细胞定位	Nucleus
纯化	Affinity purification

抗原信息

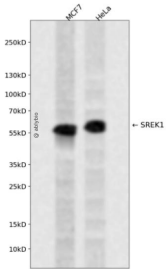
抗原信息	Recombinant fusion protein containing a sequence corresponding to amino acids 1-180 of human SREK1 (NP_631907.1).
序列	MTSLMPGAGLLPIPTPNPLTTLGVSLSSLGAIPAAALDPNIATLGEIPQPPLMGNVDPSKIDEIRRTVYVGNLNSQTTTADQLL EFFKQVGEVKFVRMAGDETPTRFAFVEFADQNSVPRALAFNGVMFGDRPLKINHSNNAIVKPPPEMTPQAAAKELEEVMK RVREAQSFISAAIEPE

靶点信息

研究背景	This gene encodes a member of a family of serine/arginine-rich (SR) splicing proteins containing RNA recognition motif (RRM) domains. The encoded protein interacts with other SR proteins to modulate splice site selection. Alternatively spliced transcript variants encoding multiple isoforms have been observed for this gene.
基因ID	140890

基因名	SREK1
Swiss	Q8WXA9
别名	SREK1;SFRS12;SRrp508;SRrp86

产品验证



Western blot analysis of SREK1 expressed in MCF7, HeLa using SREK1 Rabbit pAb at 1:1000. Secondary antibody: HRP Goat Anti-Rabbit IgG (H+L) at 1:5000. Lysates/proteins: 30ug per lane. Blocking buffer: 5% non-fat dry milk in TBST. Detection: ECL Enhanced Kit. Exposure time: 120s.

实验步骤

访问官网浏览详情: www.ablybio.cn