

# Cyclin D2 Rabbit pAb

货号: **AYP19384**

## 产品信息

反应	Human,Mouse,Rat
宿主	Rabbit
克隆性	Polyclonal
预测反应	
应用	WB IHC IF/ICC
推荐浓度	<b>WB:</b> 1:100 - 1:500 <b>IHC:</b> 1:50 - 1:200 <b>IF/ICC:</b> 1:50 - 1:200
理论分子量	24kDa/33kDa
实测分子量	33KDa
形式	Liquid
保存条件	Store at -20°C. Avoid freeze / thaw cycles. Buffer: PBS with 0.01% thiomersal,50% glycerol,pH7.3.
偶联物	Unconjugated
阳性对照	RD
细胞定位	Cytoplasm,Membrane,Nucleus
纯化	Affinity purification

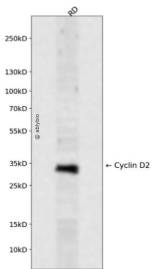
## 抗原信息

抗原信息	Recombinant fusion protein containing a sequence corresponding to amino acids 1-289 of human Cyclin D2 (NP_001750.1).
序列	MELLCHEVDPVRRRAVRDRNLLRDDRVLQNLLTIEERYLPQCSYFKCVQKDIQPYMRRMVATWMLEVCEEQKCEEEVFPLA MNYLDRFLAGVPTPKSHLQLLGAVCMFLASKLKETSPLTAEKLCIYTDNSIKPQELLEWELVVLGKWKWNLAAVTPHDFIEHI LRKLPQQREKLSLIRKHAQTFIALCATDFKFAMYPPSMIATGSVGAICGLQQDEEVSSLTCDALTELLAKITNTDVEDCLKAC QEIQIEAVLLNSLQYRQDQRDGSKSEDELQASTPTDVRDIDL

## 靶点信息

研究背景	The protein encoded by this gene belongs to the highly conserved cyclin family, whose members are characterized by a dramatic periodicity in protein abundance through the cell cycle. Cyclins function as regulators of CDK kinases. Different cyclins exhibit distinct expression and degradation patterns which contribute to the temporal coordination of each mitotic event. This cyclin forms a complex with CDK4 or CDK6 and functions as a regulatory subunit of the complex, whose activity is required for cell cycle G1/S transition. This protein has been shown to interact with and be involved in the phosphorylation of tumor suppressor protein Rb. Knockout studies of the homologous gene in mouse suggest the essential roles of this gene in ovarian granulosa and germ cell proliferation. High level expression of this gene was observed in ovarian and testicular tumors. Mutations in this gene are associated with megalencephaly-polymicrogyria-polydactyly-hydrocephalus syndrome 3 (MPPH3).
基因ID	894
基因名	CCND2
Swiss	P30279
别名	CCND2;KIAK0002;MPPH3;cyclin D2;Cyclin D2

## 产品验证



Western blot analysis of Cyclin D2 expressed in RD using Cyclin D2 Rabbit pAb at 1:1000. Secondary antibody: HRP Goat Anti-Rabbit IgG (H+L) at 1:5000. Lysates/proteins: 30ug per lane. Blocking buffer: 5% non-fat dry milk in TBST. Detection: ECL Enhanced Kit. Exposure time: 120s.

## 实验步骤

访问官网浏览详情: [www.ablybio.cn](http://www.ablybio.cn)