

IFRD1 Rabbit pAb

货号: **AYP19372**

产品信息

反应	Human,Mouse,Rat
宿主	Rabbit
克隆性	Polyclonal
预测反应	
应用	WB IHC
推荐浓度	WB: 1:500 - 1:2000 IHC: 1:50 - 1:100
理论分子量	45kDa/50kDa
实测分子量	47kDa
形式	Liquid
保存条件	Store at -20°C. Avoid freeze / thaw cycles. Buffer: PBS with 0.02% sodium azide,50% glycerol,pH7.3.
偶联物	Unconjugated
阳性对照	SW480
细胞定位	nucleus,sarcoplasm
纯化	Affinity purification

抗原信息

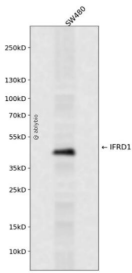
抗原信息	Recombinant fusion protein containing a sequence corresponding to amino acids 1-240 of human IFRD1 (NP_001541.2).
序列	MPKNNKRNTPHRGSSAGGGGSGAAAATAATAGGQHRNVQPFSDDEDASIETMSHCSGYSDPSSFAEDGPEVLDEEGTQ EDLEYKLGKGLIDLTKSAKTRQAALLEGIKNALASKMLYEFILERRMTLTDSIERCLKKGSDEQRAAAALASVLCIQLGPGIE SEEILKTLGPILKKIICDGSASMQRQTCATCFGVCCFIATDDITELYSTLECLENIFTKSYLKEKDTTVICSTPNTVL

靶点信息

研究背景	This gene is an immediate early gene that encodes a protein related to interferon-gamma. This protein may function as a transcriptional co-activator/repressor that controls the growth and differentiation of specific cell types during embryonic development and tissue regeneration. Mutations in this gene are associated with sensory/motor neuropathy with ataxia. This gene may also be involved in modulating the pathogenesis of cystic fibrosis lung disease. Alternate splicing results in multiple transcript variants.
------	--

基因ID	3475
基因名	IFRD1
Swiss	O00458
别名	IFRD1;PC4;TIS7

产品验证



Western blot analysis of IFRD1 expressed in SW480 using IFRD1 Rabbit pAb at 1:1000. Secondary antibody y: HRP Goat Anti-Rabbit IgG (H+L) at 1:5000. Lysates/proteins: 30ug per lane. Blocking buffer: 5% non-fat dry milk in TBST. Detection: ECL Enhanced Kit. Exposure time: 120s.

实验步骤

访问官网浏览详情: www.ablybio.cn