

PSMC3 Rabbit pAb

货号: **AYP19362**

产品信息

| | |
|-------|--|
| 反应 | Human |
| 宿主 | Rabbit |
| 克隆性 | Polyclonal |
| 预测反应 | |
| 应用 | WB IF/ICC IP |
| 推荐浓度 | WB: 1:500 - 1:2000 IF/ICC: 1:50 - 1:200 IP: 1:50 - 1:100 |
| 理论分子量 | 49kDa |
| 实测分子量 | 50kDa |
| 形式 | Liquid |
| 保存条件 | Store at -20°C. Avoid freeze / thaw cycles. Buffer: PBS with 0.02% sodium azide,50% glycerol,pH7.3. |
| 偶联物 | Unconjugated |
| 阳性对照 | MCF7,Jurkat |
| 细胞定位 | Cytoplasm,Nucleus,P-body |
| 纯化 | Affinity purification |

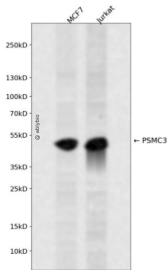
抗原信息

| | |
|------|--|
| 抗原信息 | Recombinant fusion protein containing a sequence corresponding to amino acids 1-180 of human PSMC3 (NP_002799.3). |
| 序列 | MEEGGRDKAPVQPQQSPAAAPGGTDEKPSGKERRDAGDKDKEQELSEEDKQLQDELEMLVERLGEKDTSLYRPALEELRRQIRSSTTSMTSVPKPLKFLRPHYGKLKEIYENMAPGENKRFAADIISVLAMTMSGERECLKYRLVGSQEELASWGHEYVRHLAGEVAKEWQELDDAEKVQ |

靶点信息

| | |
|-------|--|
| 研究背景 | The 26S proteasome is a multicatalytic proteinase complex with a highly ordered structure composed of 2 complexes, a 20S core and a 19S regulator. The 20S core is composed of 4 rings of 28 non-identical subunits; 2 rings are composed of 7 alpha subunits and 2 rings are composed of 7 beta subunits. The 19S regulator is composed of a base, which contains 6 ATPase subunits and 2 non-ATPase subunits, and a lid, which contains up to 10 non-ATPase subunits. Proteasomes are distributed throughout eukaryotic cells at a high concentration and cleave peptides in an ATP/ubiquitin-dependent process in a non-lysosomal pathway. An essential function of a modified proteasome, the immunoproteasome, is the processing of class I MHC peptides. This gene encodes one of the ATPase subunits, a member of the triple-A family of ATPases that have chaperone-like activity. This subunit may compete with PSMC2 for binding to the HIV tat protein to regulate the interaction between the viral protein and the transcription complex. A pseudogene has been identified on chromosome 9. |
| 基因ID | 5702 |
| 基因名 | PSMC3 |
| Swiss | P17980 |
| 别名 | PSMC3;TBP1;ATPase 3 |

产品验证



Western blot analysis of PSMC3 expressed in MCF7, Jurkat using PSMC3 Rabbit pAb at 1:1000. Secondary antibody: HRP Goat Anti-Rabbit IgG (H+L) at 1:5000. Lysates/proteins: 30ug per lane. Blocking buffer: 5 % non-fat dry milk in TBST. Detection: ECL Enhanced Kit. Exposure time: 120s.

实验步骤

访问官网浏览详情: www.ablybio.cn