

EIF3H Rabbit pAb

货号: **AYP19352**

产品信息

反应	Human,Mouse,Rat
宿主	Rabbit
克隆性	Polyclonal
预测反应	
应用	WB IHC IP
推荐浓度	WB: 1:500 - 1:2000 IHC: 1:50 - 1:200 IP: 1:50 - 1:200
理论分子量	39kDa
实测分子量	40kDa
形式	Liquid
保存条件	Store at -20°C. Avoid freeze / thaw cycles. Buffer: PBS with 0.02% sodium azide,50% glycerol,pH7.3.
偶联物	Unconjugated
阳性对照	HL-60,HT-29,NIH/3T3,HeLa,Jurkat,Mouse spleen,Mouse testis,Mouse heart,Rat spleen
细胞定位	Cytoplasm
纯化	Affinity purification

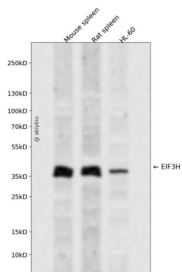
抗原信息

抗原信息	Recombinant fusion protein containing a sequence corresponding to amino acids 80-340 of human EIF3H (NP_003747.1).
序列	NCFPPQHTEDDADFDEVQYQMEMMRSRHRVNIHDLHVGWYQSTYYGSFVTRALLDSQFSYQHAIEESVLLIYDPIKTAQ GSLSLKAYRLTPKLMVEVCKEKDFSPALKKANITFEYMFEEVPIVIKNSHLINVLMWELEKKS AVADKHELLSLASSNHLGKN LQLLMDRVDEMSQDIVKYNTYMRNTSKQQQKHQYQRRQENMQRQSRGEPPLPEEDLSKLFKPPQPPARMDSLLIA GQINTYCNIFEFTAQNLGK

靶点信息

研究背景	Component of the eukaryotic translation initiation factor 3 (eIF-3 complex, which is required for several steps in the initiation of protein synthesis. The eIF-3 complex associates with the 40S ribosome and facilitates the recruitment of eIF-1, eIF-1A, eIF-2:GTP:methionyl-tRNA ⁱ and eIF-5 to form the 43S pre-initiation complex (43S PIC). The eIF-3 complex stimulates mRNA recruitment to the 43S PIC and scanning of the mRNA for AUG recognition. The eIF-3 complex is also required for disassembly and recycling of post-termination ribosomal complexes and subsequently prevents premature joining of the 40S and 60S ribosomal subunits prior to initiation. The eIF-3 complex specifically targets and initiates translation of a subset of mRNAs involved in cell proliferation, including cell cycling, differentiation and apoptosis, and uses different modes of RNA stem-loop binding to exert either translational activation or repression.
基因ID	8667
基因名	EIF3H
Swiss	O15372
别名	EIF3H;EIF3S3;eIF3-gamma;eIF3-p40

产品验证



Western blot analysis of EIF3H expressed in Mouse spleen, Rat spleen, HL-60 using EIF3H Rabbit pAb at 1:1000. Secondary antibody: HRP Goat Anti-Rabbit IgG (H+L) at 1:5000. Lysates/proteins: 30ug per lane. Blocking buffer: 5% non-fat dry milk in TBST. Detection: ECL Enhanced Kit. Exposure time: 120s.

实验步骤

访问官网浏览详情: www.ablybio.cn