

TIM-3/HAVCR2 Rabbit pAb

货号: **AYP19325**

产品信息

反应	Human,Mouse
宿主	Rabbit
克隆性	Polyclonal
预测反应	
应用	WB IF/ICC
推荐浓度	WB: 1:500 - 1:1000 IF/ICC: 1:50 - 1:200
理论分子量	85kDa/100kDa/105kDa/106kDa
实测分子量	45-70KDa
形式	Liquid
保存条件	Store at -20°C. Avoid freeze / thaw cycles. Buffer: PBS with 0.02% sodium azide,50% glycerol,pH7.3.
偶联物	Unconjugated
阳性对照	Raji,Mouse spleen
细胞定位	Membrane,Single-pass type I membrane protein
纯化	Affinity purification

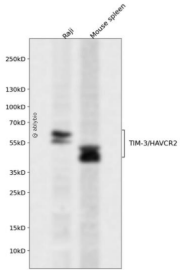
抗原信息

抗原信息	A synthetic peptide corresponding to a sequence within amino acids 1-100 of human TIM-3/HAVCR2 (NP_116171.3).
序列	MFSHLPFDCVLLLLLLLLLRSSEVEYRAEVGQNAYLPCFYTPAAPGNLVPVCWKGACPVFECGNVVLRTDERDVNYWTS RYWLNDFRKGDVSLTIENV

靶点信息

研究背景	The protein encoded by this gene belongs to the immunoglobulin superfamily, and TIM family of proteins. CD4-positive T helper lymphocytes can be divided into types 1 (Th1) and 2 (Th2) on the basis of their cytokine secretion patterns. Th1 cells are involved in cell-mediated immunity to intracellular pathogens and delayed-type hypersensitivity reactions, whereas, Th2 cells are involved in the control of extracellular helminthic infections and the promotion of atopic and allergic diseases. This protein is a Th1-specific cell surface protein that regulates macrophage activation, and inhibits Th1-mediated auto- and alloimmune responses, and promotes immunological tolerance.
基因ID	84868
基因名	HAVCR2
Swiss	Q8TDQ0
别名	HAVCR2;CD366;HAVcr-2;KIM-3;TIM3;TIMD-3;TIMD3;Tim-3

产品验证



Western blot analysis of TIM-3/HAVCR2 expressed in Raji, Mouse spleen using TIM-3/HAVCR2 Rabbit pAb at 1:1000. Secondary antibody: HRP Goat Anti-Rabbit IgG (H+L) at 1:5000. Lysates/proteins: 30ug per lane. Blocking buffer: 5% non-fat dry milk in TBST. Detection: ECL Enhanced Kit. Exposure time: 120s.

实验步骤

访问官网浏览详情: www.ablybio.cn