

BTLA Rabbit pAb

货号: **AYP19324**

产品信息

反应	Human,Mouse
宿主	Rabbit
克隆性	Polyclonal
预测反应	
应用	WB
推荐浓度	WB: 1:500 - 1:2000
理论分子量	27kDa/32kDa
实测分子量	33kDa
形式	Liquid
保存条件	Store at -20°C. Avoid freeze / thaw cycles. Buffer: PBS with 0.02% sodium azide,50% glycerol,pH7.3.
偶联物	Unconjugated
阳性对照	Jurkat,Mouse spleen,Mouse thymus
细胞定位	Membrane,Single-pass type I membrane protein
纯化	Affinity purification

抗原信息

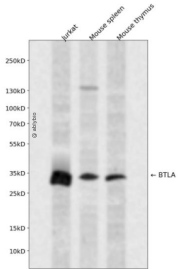
抗原信息	Recombinant fusion protein containing a sequence corresponding to amino acids 31-241 of human BTLA (NP_001078826.1).
序列	KESCDVQLYIKRQSEHSILAGDPFELECPVKYCANRPHVTWCKLNGTTCVKLEDRQTSWKEEKNISFFILHFEPVLPNDNGS YRCSANFQSNLIESHSTTLTYVTGKQNELSDTAGREINLVD AHLKSEQTEASTRQNSQVLLSETGIYDNDPDLCFRMQEGSE VYSNPCLEENKPGIVYASLNHHSVIGPNSRLARNVKEAPTEYASICVRS

靶点信息

研究背景	This gene encodes a member of the immunoglobulin superfamily. The encoded protein contains a single immunoglobulin (Ig) domain and is a receptor that relays inhibitory signals to suppress the immune response. Alternative splicing results in multiple transcript variants. Polymorphisms in this gene have been associated with an increased risk of rheumatoid arthritis.
基因ID	151888

基因名	BTLA
Swiss	Q7Z6A9
别名	BTLA;BTLA1;CD272

产品验证



Western blot analysis of BTLA expressed in Jurkat, Mouse spleen, Mouse thymus using BTLA Rabbit pAb at 1:1000. Secondary antibody: HRP Goat Anti-Rabbit IgG (H+L) at 1:5000. Lysates/proteins: 30ug per lane. Blocking buffer: 5% non-fat dry milk in TBST. Detection: ECL Enhanced Kit. Exposure time: 120s.

实验步骤

访问官网浏览详情: www.ablybio.cn