

LIPC Rabbit pAb

货号: AYP19298

产品信息

反应	Human
宿主	Rabbit
克隆性	Polyclonal
预测反应	
应用	WB IF/ICC
推荐浓度	WB: 1:500 - 1:2000 IF/ICC: 1:50 - 1:200
理论分子量	55kDa
实测分子量	55kDa
形式	Liquid
保存条件	Store at -20°C. Avoid freeze / thaw cycles. Buffer: PBS with 0.02% sodium azide, 50% glycerol, pH7.3.
偶联物	Unconjugated
阳性对照	
细胞定位	Secreted
纯化	Affinity purification

抗原信息

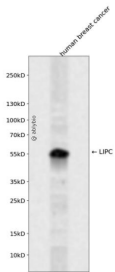
抗原信息	Recombinant fusion protein containing a sequence corresponding to amino acids 280-499 of human LIPC (NP_000227.2).
序列	ERSVHLFIDSLHAGTQSMAYPCGDMNSFSQGLCLSCCKGRCNTLGYHVRQEPRSKSKRLFLVTRAQSPFKVYHYQFKIQ FINQTETPIQTFTMSLLGTKEKMQKIPITLGKGIASNKTYSLITLDVDIGELIMIKFKWENSAVWANVWDTVQTIIPWSTGP RHSGLVLKTIRVKAGETQQRMTFCSENTDDLLLRPTQEKIFVKCEIKSKTSKRKIR

靶点信息

研究背景	LIPC encodes hepatic triglyceride lipase, which is expressed in liver. LIPC has the dual functions of triglyceride hydrolase and ligand/bridging factor for receptor-mediated lipoprotein uptake.
基因ID	3990

基因名	LIPC
Swiss	P11150
别名	LIPC;HDLQC12;HL;HTGL;LIPH;lipase C

产品验证



Western blot analysis of LIPC expressed in human breast cancer using LIPC Rabbit pAb at 1:1000. Secondary antibody: HRP Goat Anti-Rabbit IgG (H+L) at 1:5000. Lysates/proteins: 30ug per lane. Blocking buffer: 5% non-fat dry milk in TBST. Detection: ECL Enhanced Kit. Exposure time: 120s.

实验步骤

访问官网浏览详情: www.ablybio.cn