

PSMA6 Rabbit pAb

货号: **AYP19290**

产品信息

反应	Human,Mouse,Rat
宿主	Rabbit
克隆性	Polyclonal
预测反应	
应用	WB IF/ICC
推荐浓度	WB: 1:500 - 1:2000 IF/ICC: 1:50 - 1:200
理论分子量	18kDa/25kDa/27kDa
实测分子量	27kDa
形式	Liquid
保存条件	Store at -20°C. Avoid freeze / thaw cycles. Buffer: PBS with 0.02% sodium azide,50% glycerol,pH7.3.
偶联物	Unconjugated
阳性对照	HepG2,HeLa,A-549,COS-7,PC-12,MCF7,NCI-H460,A375,Mouse skeletal muscle
细胞定位	Cytoplasm,Nucleus,P-body
纯化	Affinity purification

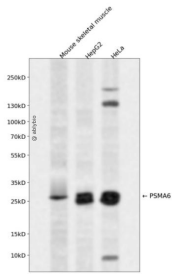
抗原信息

抗原信息	Recombinant fusion protein containing a sequence corresponding to amino acids 1-246 of human PSMA6 (NP_002782.1).
序列	MSRGSSAGFDRHITIFSPEGRLYQVEYAFKAINQGGLTSAVAVRGKDCAVIVTQKKVPDKLLDSSTVTHLTKITENIGCVMTG MTADSRSQVQRARYEAANWKYKYGYEIPVDMLCKRIADISQVYTQNAEMRPLGCCMILIGIDEEQGPQVYKCDPAGYYCG FKATAAGVKQTESTSFLEKKVKKKFDWTFEQTVETAITCLSTVLSIDFKPSEIEVGVVTVENPKFRILTEAIDAHLVALAERD

靶点信息

研究背景	The proteasome is a multicatalytic proteinase complex with a highly ordered ring-shaped 20S core structure. The core structure is composed of 4 rings of 28 non-identical subunits; 2 rings are composed of 7 alpha subunits and 2 rings are composed of 7 beta subunits. Proteasomes are distributed throughout eukaryotic cells at a high concentration and cleave peptides in an ATP/ubiquitin-dependent process in a non-lysosomal pathway. An essential function of a modified proteasome, the immunoproteasome, is the processing of class I MHC peptides. This gene encodes a member of the peptidase T1A family, that is a 20S core alpha subunit. Multiple transcript variants encoding several different isoforms have been found for this gene. A pseudogene has been identified on the Y chromosome.
基因ID	5687
基因名	PSMA6
Swiss	P60900
别名	PSMA6;IOTA;PROS27;p27K

产品验证



Western blot analysis of PSMA6 expressed in Mouse skeletal muscle, HepG2, HeLa using PSMA6 Rabbit pAb at 1:1000. Secondary antibody: HRP Goat Anti-Rabbit IgG (H+L) at 1:5000. Lysates/proteins: 30ug per lane. Blocking buffer: 5% non-fat dry milk in TBST. Detection: ECL Enhanced Kit. Exposure time: 120s.

实验步骤

访问官网浏览详情: www.ablybio.cn