

# PSMA4 Rabbit pAb

货号: **AYP19289**

## 产品信息

反应	Human,Mouse,Rat,Monkey
宿主	Rabbit
克隆性	Polyclonal
预测反应	
应用	WB
推荐浓度	<b>WB:</b> 1:500 - 1:2000
理论分子量	21kDa/29kDa
实测分子量	29kDa
形式	Liquid
保存条件	Store at -20°C. Avoid freeze / thaw cycles. Buffer: PBS with 0.02% sodium azide,50% glycerol,pH7.3.
偶联物	Unconjugated
阳性对照	293T,U-251MG,HeLa,COS-7,PC-12,Jurkat,Mouse liver,Mouse kidney
细胞定位	Cytoplasm,Nucleus,P-body
纯化	Affinity purification

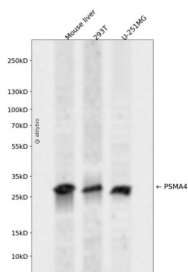
## 抗原信息

抗原信息	Recombinant fusion protein containing a sequence corresponding to amino acids 1-261 of human PSMA4 (NP_001096137.1).
序列	MSRRYDSRTTIFSPGRLYQVEYAMEAIGHAGTCLGILANDGVLLAAERRNIHKLLDEVFFSEKIYKLNEDMACSVAGITSDA NVLTNELRLIAQRYLLQYQEPIPCQLVTALCDIKQAYTQFGGKRPFVSVLLYIGWDKHYGFQLYQSDPSGNYGGWKATCI GNNSAAVSMKQDYKEGEMTLKSALALAIKVLNKTMDVSKLSAEKVEIATLTRENGKTIVIRVLKQKEVEQLIKKHEEEAK AEREKKEKEQKEKDK

## 靶点信息

研究背景	The proteasome is a multicatalytic proteinase complex with a highly ordered ring-shaped 20S core structure. The core structure is composed of 4 rings of 28 non-identical subunits; 2 rings are composed of 7 alpha subunits and 2 rings are composed of 7 beta subunits. Proteasomes are distributed throughout eukaryotic cells at a high concentration and cleave peptides in an ATP/ubiquitin-dependent process in a non-lysosomal pathway. An essential function of a modified proteasome, the immunoproteasome, is the processing of class I MHC peptides. This gene encodes a member of the peptidase T1A family, that is a 20S core alpha subunit. Three alternatively spliced transcript variants encoding different isoforms have been found for this gene.
基因ID	5685
基因名	PSMA4
Swiss	P25789
别名	PSMA4;HC9;HsT17706;PSC9

## 产品验证



Western blot analysis of PSMA4 expressed in Mouse liver, 293T, U-251MG using PSMA4 Rabbit pAb at 1:1000. Secondary antibody: HRP Goat Anti-Rabbit IgG (H+L) at 1:5000. Lysates/proteins: 30ug per lane. Blocking buffer: 5% non-fat dry milk in TBST. Detection: ECL Enhanced Kit. Exposure time: 120s.

## 实验步骤

访问官网浏览详情: [www.ablybio.cn](http://www.ablybio.cn)