

ST14 Rabbit pAb

货号: **AYP19286**

产品信息

反应	Human,Mouse
宿主	Rabbit
克隆性	Polyclonal
预测反应	
应用	WB IHC
推荐浓度	WB: 1:500 - 1:2000 IHC: 1:50 - 1:200
理论分子量	94kDa
实测分子量	100kDa
形式	Liquid
保存条件	Store at -20°C. Avoid freeze / thaw cycles. Buffer: PBS with 0.02% sodium azide,50% glycerol,pH7.3.
偶联物	Unconjugated
阳性对照	Mouse kidney,Mouse liver
细胞定位	Membrane,Single-pass type II membrane protein
纯化	Affinity purification

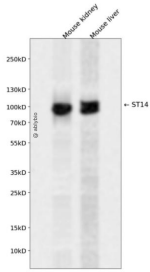
抗原信息

抗原信息	Recombinant fusion protein containing a sequence corresponding to amino acids 566-855 of human ST14 (NP_068813.1).
序列	TCTKHTYRCLNGLCLSKGNPECDGKEDCSDGSDEKDCDCGLRSFTRQARVVGTTDADEGEWPWQVSLHALGQGHICG ASLISPNWLVSAAHCYIDDRGFRYSPTQWTAFLGLHDQSQRSAPGVQERRLKRIISHPFNDFTFDYDIALLELEKPAEYS SMVRPICLPDASHVFPAGKAIWVTGWGHTQYGGTGALILQKGEIRVINQTTCCENLLPQQITPRMMCVGFLSGGVDSCQG DSGGPLSSVEADGRIFQAGVVSWDGCAQRNKPVGYYTRLPFRDWIKENTGV

靶点信息

研究背景	The protein encoded by this gene is an epithelial-derived, integral membrane serine protease. This protease forms a complex with the Kunitz-type serine protease inhibitor, HAI-1, and is found to be activated by sphingosine 1-phosphate. This protease has been shown to cleave and activate hepatocyte growth factor/scattering factor, and urokinase plasminogen activator, which suggest the function of this protease as an epithelial membrane activator for other proteases and latent growth factors. The expression of this protease has been associated with breast, colon, prostate, and ovarian tumors, which implicates its role in cancer invasion, and metastasis.
基因ID	6768
基因名	ST14
Swiss	Q9Y5Y6
别名	ST14;ARCI11;HAI;MT-SP1;MTSP1;PRSS14;SNC19;TADG15;TMPRSS14

产品验证



Western blot analysis of ST14 expressed in Mouse kidney, Mouse liver using ST14 Rabbit pAb at 1:1000. Secondary antibody: HRP Goat Anti-Rabbit IgG (H+L) at 1:5000. Lysates/proteins: 30ug per lane. Blocking buffer: 5% non-fat dry milk in TBST. Detection: ECL Enhanced Kit. Exposure time: 120s.

实验步骤

访问官网浏览详情: www.ablybio.cn