

# TCAP Rabbit pAb

货号: **AYP19281**

## 产品信息

反应	Human,Mouse,Rat
宿主	Rabbit
克隆性	Polyclonal
预测反应	
应用	WB
推荐浓度	<b>WB:</b> 1:500 - 1:2000
理论分子量	19kDa
实测分子量	19kDa
形式	Liquid
保存条件	Store at -20°C. Avoid freeze / thaw cycles. Buffer: PBS with 0.02% sodium azide,50% glycerol,pH7.3.
偶联物	Unconjugated
阳性对照	Mouse heart,Mouse skeletal muscle
细胞定位	Cytoplasm,myofibril,sarcomere
纯化	Affinity purification

## 抗原信息

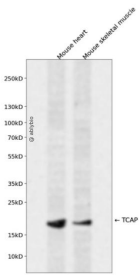
抗原信息	Recombinant fusion protein containing a sequence corresponding to amino acids 1-167 of human TCAP ( NP_003664.1).
序列	MATSELSCEVSEENCERREAFWAEWKDLTLSTRPEEGCSLHEEDTQRHETYHQGQCQVLVQRSPWLMMRMGILGRGL QEYQLPYQRVLPPIFTPAKMGATKEEREDTPIQLQELLALETALGGQCVDREQVAEITKQLPPVVPVSKPGALRRSLSRM SQEAQRG

## 靶点信息

研究背景	Sarcomere assembly is regulated by the muscle protein titin. Titin is a giant elastic protein with kinase activity that extends half the length of a sarcomere. It serves as a scaffold to which myofibrils and other muscle related proteins are attached. This gene encodes a protein found in striated and cardiac muscle that binds to the titin Z1-Z2 domains and is a substrate of titin kinase, interactions thought to be critical to sarcomere assembly. Mutations in this gene are associated with limb-girdle muscular dystrophy type 2G.
------	--

基因ID	8557
基因名	TCAP
Swiss	O15273
别名	TCAP;CMD1N;CMH25;LGMD2G;T-cap;TELE;telethonin;titin-cap

## 产品验证



Western blot analysis of TCAP expressed in Mouse heart, Mouse skeletal muscle using TCAP Rabbit pAb at 1:1000. Secondary antibody: HRP Goat Anti-Rabbit IgG (H+L) at 1:5000. Lysates/proteins: 30ug per lane. Blocking buffer: 5% non-fat dry milk in TBST. Detection: ECL Enhanced Kit. Exposure time: 120s.

## 实验步骤

访问官网浏览详情: [www.ablybio.cn](http://www.ablybio.cn)