

MIWI Rabbit pAb

货号: **AYP19279**

产品信息

反应	Human,Mouse,Rat
宿主	Rabbit
克隆性	Polyclonal
预测反应	
应用	WB IHC
推荐浓度	WB: 1:500 - 1:2000 IHC: 1:50 - 1:200
理论分子量	95kDa/98kDa
实测分子量	98kDa
形式	Liquid
保存条件	Store at -20°C. Avoid freeze / thaw cycles. Buffer: PBS with 0.02% sodium azide,50% glycerol,pH7.3.
偶联物	Unconjugated
阳性对照	Mouse testis,Rat testis
细胞定位	Cytoplasm
纯化	Affinity purification

抗原信息

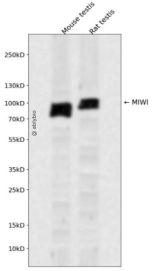
抗原信息	A synthetic peptide corresponding to a sequence within amino acids 1-100 of mouse PIWIL1 (NP_067286.1).
序列	MTGRARARARGRARGQETVQHVGAASQQPGYIPPRPQQSPTEGDLVGRGRQRGMVVGATSKSQELQISAGFQELSLA ERGGRRRDFHDLGVNTRQNLDH

靶点信息

研究背景	This gene encodes a member of the PIWI subfamily of Argonaute proteins, evolutionarily conserved proteins containing both PAZ and Piwi motifs that play important roles in stem cell self-renewal, RNA silencing, and translational regulation in diverse organisms. The encoded protein may play a role as an intrinsic regulator of the self-renewal capacity of germline and hematopoietic stem cells. Alternatively spliced transcript variants encoding different isoforms have been found for this gene.
------	--

基因ID	57749
基因名	
Swiss	Q9JMB7
别名	PIWIL1;CT80.1;HIWI;MIWI;PIWI

产品验证



Western blot analysis of MIWI expressed in Mouse testis,Rat testis using MIWI Rabbit pAb at 1:1000. Secondary antibody: HRP Goat Anti-Rabbit IgG (H+L) at 1:5000. Lysates/proteins: 30ug per lane. Blocking buffer: 5% non-fat dry milk in TBST. Detection: ECL Enhanced Kit. Exposure time: 120s.

实验步骤

访问官网浏览详情: www.ablybio.cn