

TIMM17A Rabbit pAb

货号: **AYP19276**

产品信息

反应	Human,Mouse
宿主	Rabbit
克隆性	Polyclonal
预测反应	
应用	WB IF/ICC
推荐浓度	WB: 1:500 - 1:2000 IF/ICC: 1:50 - 1:200
理论分子量	18kDa
实测分子量	18kDa
形式	Liquid
保存条件	Store at -20°C. Avoid freeze / thaw cycles. Buffer: PBS with 0.02% sodium azide,50% glycerol,pH7.3.
偶联物	Unconjugated
阳性对照	NCI-H460,HeLa,A-549,MCF7,HT-29,Mouse kidney,Mouse heart
细胞定位	Mitochondrion inner membrane,Multi-pass membrane protein
纯化	Affinity purification

抗原信息

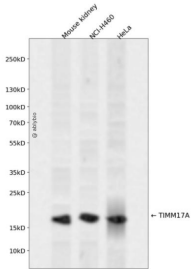
抗原信息	Recombinant fusion protein containing a sequence corresponding to amino acids 1-171 of human TIMM17 A (NP_006326.1).
序列	MEEYAREPCPWRIVDCCGGAFTMGTIGGGIFQAIKGFNRNSPVGNVHRLRGLSLTAIKTRAPQLGGSFVWGGFLFSMIDCS MVQVRGKEDPWNSITSGALTGAILAARNGPVAMVGSAAAMGGILLALIEGAGILLTRFASAQFPNGPQFAEDPSQLPSTQLP SSPFGDYRQYQ

靶点信息

研究背景	Essential component of the TIM23 complex, a complex that mediates the translocation of transit peptide-containing proteins across the mitochondrial inner membrane.
基因ID	10440

基因名	TIMM17A
Swiss	Q99595
别名	TIMM17A;TIM17;TIM17A

产品验证



Western blot analysis of TIMM17A expressed in Mouse kidney, NCI-H460, HeLa using TIMM17A Rabbit p Ab at 1:1000. Secondary antibody: HRP Goat Anti-Rabbit IgG (H+L) at 1:5000. Lysates/proteins: 30ug per lane. Blocking buffer: 5% non-fat dry milk in TBST. Detection: ECL Enhanced Kit. Exposure time: 12 0s.

实验步骤

访问官网浏览详情: www.ablybio.cn