

# CPA6 Rabbit pAb

货号: **AYP19252**

## 产品信息

反应	Human,Mouse,Rat
宿主	Rabbit
克隆性	Polyclonal
预测反应	
应用	WB IHC IF/ICC
推荐浓度	<b>WB:</b> 1:500 - 1:2000 <b>IHC:</b> 1:50 - 1:200 <b>IF/ICC:</b> 1:50 - 1:200
理论分子量	10kDa/37kDa/51kDa
实测分子量	51kDa
形式	Liquid
保存条件	Store at -20°C. Avoid freeze / thaw cycles. Buffer: PBS with 0.02% sodium azide,50% glycerol,pH7.3.
偶联物	Unconjugated
阳性对照	HT-29,HepG2,HeLa
细胞定位	Secreted,extracellular matrix,extracellular space
纯化	Affinity purification

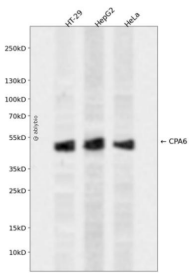
## 抗原信息

抗原信息	Recombinant fusion protein containing a sequence corresponding to amino acids 130-437 of human CPA6 (NP_065094.3).
序列	SLSGYNIEVYHSLEEIQNWMHHLNKTTHSGLIHMFSIGRSYEGRSFLFKLGRRSRLKRAVWIDCGIHAREWIGPAFCQWFV KEALLTYKSDPAMRKMLNHLFYIMPVFNVDGYHFSWTNDRFWRKTRSRNSRFRRCRGVDANRNWVKWKCDEGASMHP CDDTYCGPPESEPEVKAVANFLRKHHRKHIRAYLSFHAYAQMMLYPYSYKYATIPNFRFCVESAAAYKAVNALQSVYGVRYRYG PASTTLYVSSGSSMDWAYKNGIPYAFAFELRDTGYFGFLLPEMLIKPTCTETMLAVKNITMHLKKCP

## 靶点信息

研究背景	The gene encodes a member of the peptidase M14 family of metallo-carboxypeptidases. The encoded pre-protein is proteolytically processed to generate the mature enzyme, which catalyzes the release of large hydrophobic C-terminal amino acids. This enzyme has functions ranging from digestion of food to selective biosynthesis of neuroendocrine peptides. Mutations in this gene may be linked to epilepsy and febrile seizures, and a translocation t(6;8)(q26;q13) involving this gene has been associated with Duane retraction syndrome.
基因ID	57094
基因名	CPA6
Swiss	Q8N4T0
别名	CPA6;CPAH;ETL5;FEB11

## 产品验证



Western blot analysis of CPA6 expressed in HT-29, HepG2, HeLa using CPA6 Rabbit pAb at 1:1000. Secondary antibody: HRP Goat Anti-Rabbit IgG (H+L) at 1:5000. Lysates/proteins: 30ug per lane. Blocking buffer: 5% non-fat dry milk in TBST. Detection: ECL Enhanced Kit. Exposure time: 120s.

## 实验步骤

访问官网浏览详情: [www.ablybio.cn](http://www.ablybio.cn)